

2022 -  
2026

# City of Tecumseh Parks and Recreation Five Year Plan



Prepared by:

City of Tecumseh

Parks and Recreation Department

PO Box 396

Tecumseh, Michigan 49286

[www.mytecumseh.org](http://www.mytecumseh.org)



## Acknowledgements

### ***City Council***

Jack Baker, Mayor

Stephanie Harmon, Mayor Pro-Tem

Gary Naugle

Brian Radant

Vicki Riddle

Austin See

Ron Wimple

### ***City Manager***

Dan Swallow

### ***Parks and Recreation Director***

Sarah Gilmore

### ***Parks and Recreation Advisory Board***

Stacy Downing, Chairperson

Becky Selenko, Secretary

John Miller

Dan Leslie

Randy Salisbury

## Contents

Acknowledgements.....	3
Introduction .....	6
Community Description .....	7
Location and Population .....	7
Physical and Historical Features .....	8
Topography .....	8
Watershed and Surface Water Resources .....	9
Program Inventory .....	10
Youth Activities and Programs.....	10
Activities and Programs for all ages.....	11
Park and Recreation Areas Inventory .....	12
Trails and Non-motorized Pathways.....	15
Park and Connector Trail Type Descriptions.....	16
Recreational Use Location Map .....	17
Additional Recreation Area Inventory .....	18
Schools .....	19
Personnel .....	20
Administrative Structure.....	21
2021-2022 Parks and Recreation Department Budget Summary .....	22
Funding Sources of Parks and Recreation Budget.....	22
Capital Improvement Schedule .....	23
Community Relationships .....	24
Public Input Process.....	27
Parks and Recreation Department Public Opinion Survey Results.....	30
Public Opinion Survey Comments.....	323
Goals and Objectives.....	35
Action Plan .....	36
Projected Action Plan Implementation .....	45
Implementation Strategies .....	46
Demographics .....	477
Average Household Size.....	477
Population Trends.....	48
Regional Population Trends .....	488
Age Group Comparisons .....	49
Gender .....	49
Employment by Industry.....	50
Race.....	500
People with Disabilities.....	500
Income .....	511
Education .....	511
APPENDIX A.....	522

APPENDIX B1 .....	543
APPENDIX B2 .....	554
APPENDIX C .....	565
APPENDIX D .....	576
APPENDIX E .....	587
APPENDIX F .....	598
APPENDIX G .....	59
APPENDIX H .....	610
APPENDIX I1 .....	621
APPENDIX I2 .....	632
APPENDIX I3 .....	643
APPENDIX J .....	654
APPENDIX K .....	665
APPENDIX L .....	676
APPENDIX M .....	687
APPENDIX N .....	68
APPENDIX O .....	69
APPENDIX P .....	70
APPENDIX Q .....	71
APPENDIX R .....	72
APPENDIX S .....	73
APPENDIX T .....	74
APPENDIX U .....	75
APPENDIX V .....	76
APPENDIX W .....	77

## Introduction

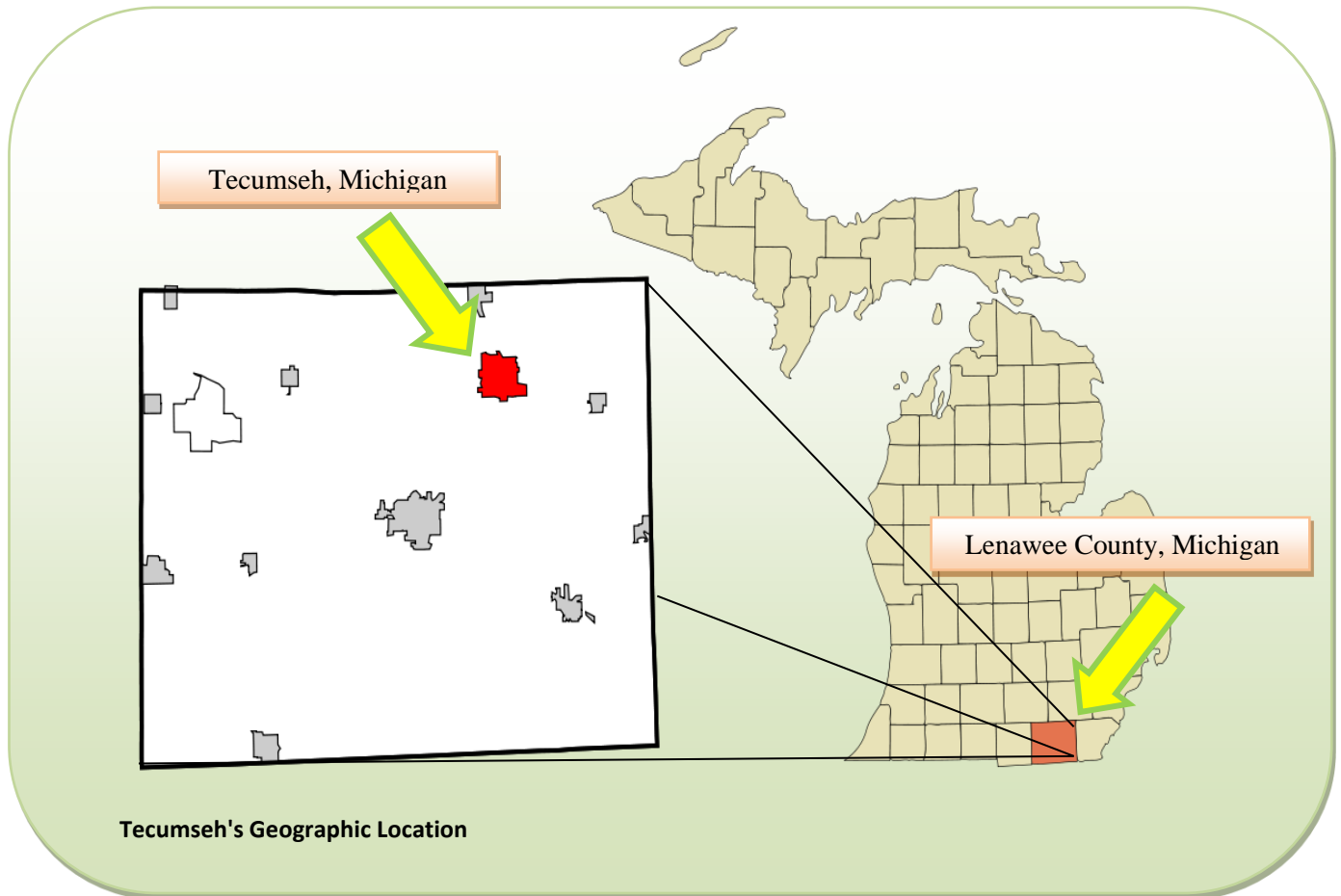
Recreation and park land play major roles in the lives of the residents of Tecumseh. Since the inception of the Parks and Recreation Department in 1956, concerted efforts have been made to offer the community various recreational opportunities to increase the quality of life and livability of Tecumseh.

The Purpose of this plan is to identify assets and needs in order to guide recreation planning and development efforts of the Parks and Recreation Department over the next five years. This will be used to guide decisions regarding parks, recreation, services, and facilities overseen by Tecumseh's Parks and Recreation Department. Our parks encompass active and passive recreation as well as cultural and natural history resources. At this time this is the only fully functioning parks and recreation department in the county; that is to say, offering organized active and passive recreation and programming. It is imperative that we continue to maintain and improve our programming and parklands. This 5-year plan will allow the city to apply for grant funding from various sources in order to achieve our goals.

The City of Tecumseh Parks and Recreation Department is responsible for the development of this plan. Additionally, the Parks and Recreation Advisory Board provided invaluable assistance in plan preparation and policy recommendations. The Advisory Board consists of five members representing the public in Tecumseh.

The 2022-2026 City of Tecumseh Parks and Recreation Plan was developed in accordance with the *Guidelines for the Development of Community Parks and Recreation Plans* as revised by the Michigan Department of Natural Resources in 2021.

## Community Description



## Location and Population

The City of Tecumseh is located in Lenawee County in the southeastern region of Michigan approximately 20 miles north of the Ohio Border. Tecumseh is one of four cities in Lenawee County (other cities include Adrian, Hudson and Morenci.)

Tecumseh Township borders Tecumseh on the north, east, and west sides of the city. Raisin Township is located immediately south of Tecumseh.

According to the U.S. Census Bureau as of 2020, the estimated population of Tecumseh is 8,680. Tecumseh Township's estimated population is 2,042 and Raisin Township has a population estimated at 7,900. (<https://data.census.gov/cedsci/>).

## Physical and Historical Features

The City of Tecumseh covers approximately 5.6 square miles, with a significant number of historical structures located throughout the city. The downtown district consists of four blocks of buildings, dating as far back as 1852. Additionally, Tecumseh has a residential area listed as a National Historic District. The River Raisin, two millponds, and Evans Creek are prominent physical water features located in the city.



## Topography

Receding glaciers created the gently rolling topography of the area thousands of years ago, resulting in a variety of clay, silt, sandy and gravel soils. According to Abrams Aerials, Tecumseh's elevation ranges from 880 feet in the north to 730 feet in the southeast. The majority of the natural vegetation and forested areas are located along the River Raisin and its tributaries.





## **Watershed and Surface Water Resources**

Tecumseh is located within the River Raisin watershed, which drains eastward into Monroe County and Lake Erie. The River Raisin watershed encompasses approximately 1,072 square miles.

According to a 1988 Land Use Survey, the City of Tecumseh contains 170 acres of natural and manmade surface water areas. These bodies of water include the River Raisin, Globe Mill Pond, Red Mill Pond, Evans Creek, and the Tecumseh Park Pond.

The 100-year Flood Plain is determined by maps prepared by the U.S. Department of Housing and Urban Development as part of the National Flood Insurance Program. They determine areas that are likely to flood once every 100 years. Tecumseh's flood plain elevation ranges between 732 and 749 feet.

## Program Inventory

The recreation inventory consists of programs and facilities. The program inventory lists all programming currently offered through the Parks and Recreation Department.

### Youth Activities and Programs

Baseball	ages: 3-6
Basketball	ages: 3-11
Basketball Camps	ages: 5-14
Bowling Program	ages: 5-14
Crafting Classes	ages: 7-11
Easter Egg Scramble	ages: 3-10
Flag Football	ages: 6-10
Floor Hockey	ages: 6-10
Golf Camp	ages: 8-14
Halloween & Christmas Parties	ages: preschool
Kids Day & Fishing Derby	ages: all ages
Kids Fun Camps	ages: 6-10
Lacrosse Camp	ages: 7 & up
Skateboard Jam	ages: 11 & up
Spring and Fall Tot Soccer	ages: 3 & 4
Spring and Fall Soccer	ages: 5-14
Tennis	ages: 5-14
Tot time	ages: 0-4
Volleyball Camp	ages: 8-14



## Activities and Programs for all ages

Adult Drop-in Soccer  
Basketball  
Best Front Yard Contest  
Biking  
Canoe & Kayak Races  
Cardio Drumming  
Cardio Fitness Classes  
Cornhole  
Craft Show  
Daddy-Daughter Dances  
Dodgeball Tournament  
Dog Park  
Family Fun Nights  
Family Dash  
Fireside Stories  
Fishing

Geocaching  
Geology talks  
Ghost Tours  
Guided Hikes  
Hiking  
Holiday Light Contest  
Hunt for Bigfoot  
Indoor Soccer  
Indoor Walking  
In-line hockey  
Jazzercise classes  
Kayaking  
Longest Day  
Line dancing  
Mother Son dodgeball  
Nature Programs

Movies in the Park  
Music in the Park  
Nerf Wars  
Open Gym  
Pickleball  
Sand Volleyball  
Senior Exercise Classes  
Skate Park  
S'more Cookoff  
Splash Pad  
Swimming  
Table Tennis  
Tennis  
Volleyball  
Yoga Classes





## Park and Recreation Areas Inventory

### Accessibility Code:

- 1 = None of the facilities/park areas meet 2010 ADA Standards for Accessible Design
- 2 = Some of the facilities/park areas meet 2010 ADA Standards for Accessible Design
- 3 = Most of the facilities/park areas meet 2010 ADA Standards for Accessible Design
- 4 = All of the facilities/park areas meet 2010 ADA Standards for Accessible Design
- 5 = The facility/park areas meet the Principles of Universal Design

Name	Features/Facilities	Accessibility Code	Acreage	Service Area	MDNR Grant Funding
<b>Adams Park</b> <b>309 E Chicago Blvd</b>	Picnic tables; restrooms; fountain; dog waste station; paved parking	3	1	Mini park located in the heart of Tecumseh's downtown district servicing the entire city	N
<b>Aden Mead Park</b> <b>211 Occidental</b>	1 ball diamond; 1 basketball hoop; benches; 2 drinking fountains; picnic shelter; picnic tables; playground; dog waste station; restrooms; 1 soccer field; paved parking	3	9.9	Community park located on the west side of Tecumseh servicing the entire city and surrounding townships	Development Grant CM 99-024
<b>Beardsley Park</b> <b>M-50 South across from Satterthwaite Park</b>	Undeveloped green space	N/A	8.75		N
<b>Cal Zorn Park</b> <b>300 E Russell Rd</b>	3 ball diamonds; benches; dog park; drinking fountains; grills; picnic shelter; picnic tables; playground; gaga ball pit; dog waste station; restrooms; soccer fields; lacrosse field; 1 Splash Pad; paved parking	3	15.45	Community park located on the south side of Tecumseh servicing the entire city and surrounding townships.	N

Name	Features/Facilities	Accessibility Code	Acreage	Service Area	MDNR Grant Funding
<b>Douglas W. Bird Park</b> 400 N Maumee St	Playground; benches; grills; hiking trails; picnic tables; Evans Creek; bridge; on-street parking	3	23.7	Community park located in a northeast neighborhood servicing the entire city.	Development Grant 89-598
<b>Elliott Park</b> Corner of E Kilbuck and Ottawa Street	Benches; grills; picnic tables; playground; book exchange box; dog waste station; fire pit; scout cabin	2	1.4	Neighborhood park centrally located in Tecumseh	N
<b>Evans Park</b> 609 N. Evans St.	Fishing access; parking; picnic shelter; canoe/kayak launch; historical marker	2	7.65	Neighborhood park located in the northern quadrant of Tecumseh servicing the entire city	N
<b>Hotrum Park</b> 100 W Shawnee	Gazebo; benches; drinking fountain; on-street parking	2	0.8	Mini-park servicing the downtown and historic homes district	N
<b>Indian Crossing Trails Park</b> Trailheads: Burt St and Globe Mill Pond (703 E Chicago Blvd)	Hiking trails; fishing; wildlife watching; canoe/kayak launches; bike parking; paved parking	2	144.4	Natural Resources Area located in the eastern quadrant of Tecumseh servicing the entire city and surrounding townships	Acquisition Grant 94-156
<b>John W. Smith Park</b> 810 N Evans	AJ Smith Recreation Center: two gymnasiums, meeting/rental room, Parks & Recreation offices, restrooms; picnic tables; fire pit; wildflower garden; paved parking	3	23.7	Community park located on the north side of Tecumseh servicing the entire city	N

Name	Features/Facilities	Accessibility Code	Acreage	Service Area	MDNR Grant Funding
<b>Patterson Park 401 N Van Buren St</b>	Picnic Table, River, paved parking	3	1	Mini-park servicing a northwest residential area	N
<b>Satterthwaite Park 703 E Chicago Blvd</b>	2 picnic shelters; picnic tables; basketball hoop; benches; dock; fishing; grills; 1 In-line hockey rink; playground; pond; restrooms (seasonal); 2 tennis courts; skate park; watercraft rental; paved parking	3	61	Large Urban Park located in the eastern quadrant of Tecumseh servicing the entire city and surrounding townships	LWCF 26-00883
<b>Sunset Park Chicago Blvd at Sunset Street</b>	Undeveloped green space	N/A	1		N
<b>Tecumseh Park 403 Adrian St</b>	Fishing; grills; 1 picnic shelter; picnic tables; 1 Playground; bike parking; pond; restrooms; 2 sand volleyball courts; sledding hill; beach; swimming area; paved parking	2	24.5	Community park located on the southwest side of the city servicing the entire city and surrounding townships	Acquisition Grants 26-0074 26-00014 RP 17-0038
<b>Total Acreage</b>			<b>324.25</b>		

## Trails and Non-motorized Pathways

Trail Name	Type	Trail Description
Bird Park/Evans Creek Trail	III	Each wood chipped 0.25-mile park trails located in Bird Park, running along Evans Creek; totaling 0.5 miles of out-and-back park trails
Brown Street Pathway	II	Multi-use 0.2-mile hard surfaced connector trail providing a safe travel link to the Tecumseh High School Campus.
Indian Crossing Trails	III	4+ miles of park trails located within Indian Crossing Trails Park
North Occidental Pathway	II	Multi-use 0.4-mile hard surfaced connector trail providing a safe travel link to Chicago Boulevard
North Evans Trail	II	Multi-use 0.6-mile hard surfaced connector trail providing a safe travel link to John W. Smith Park and beyond
Russell Road to Patterson Street Trail	I	Multi-use 0.5-mile hard surfaced connector trail linking Cal Zorn Recreation Center with Tecumseh Acres School
West Chicago Boulevard Pathway	II	Multi-use 0.7-mile hard surfaced connector trail linking west end business district to neighborhoods and downtown

## **Park and Connector Trail Type Descriptions**

### **Park Trails**

General Description: Multipurpose trails located within greenways, parks, and natural resource areas. Focus is on recreational value and harmony with natural environment.

Description of each Type

- Type I: Separate/single-purpose hard-surfaced trails for pedestrians or bicyclists/in-line skaters
- Type II: Multipurpose hard-surfaced trails for pedestrians and bicyclists/in-line skaters
- Type III: Nature trails for pedestrians. May be hard or soft surfaced.

### **Connector Trails**

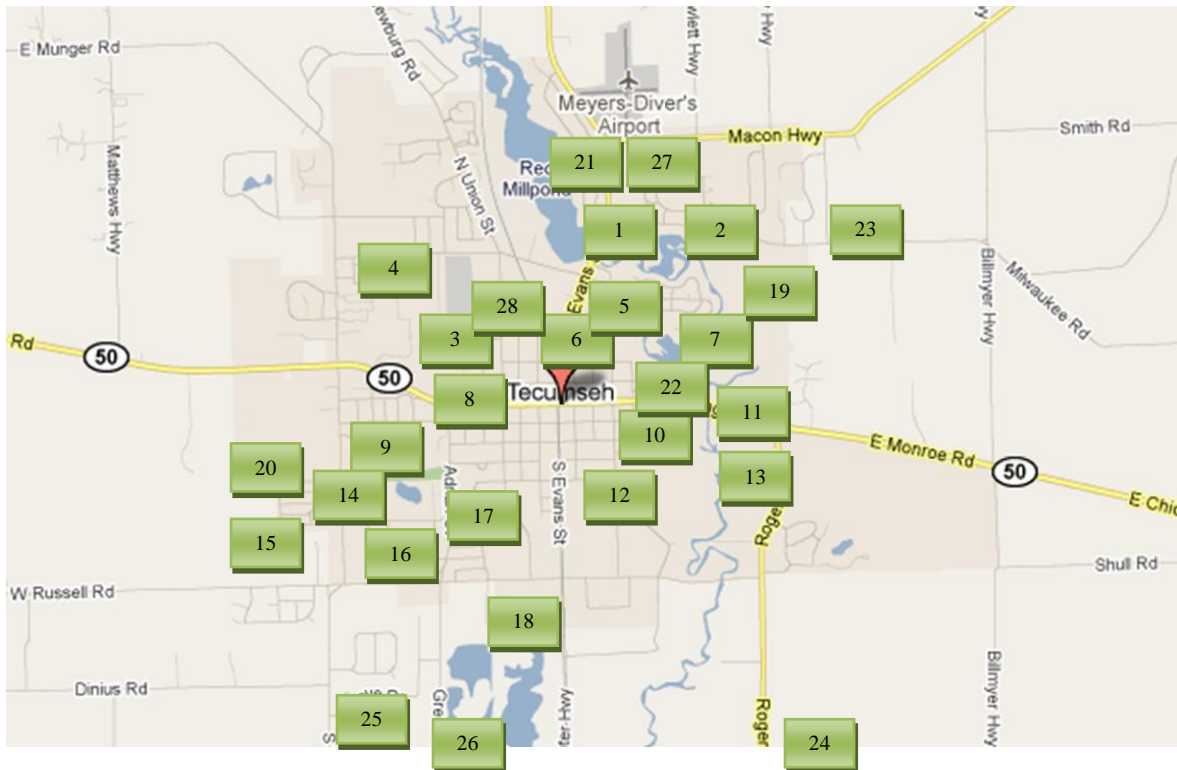
General Description: Multipurpose trails that emphasize safe travel for pedestrians to and from parks and around the community. Focus is as much on transportation as it is on recreation.

Description of each Type

- Type I: Separate/single-purpose hard-surfaced trails for pedestrians or bicyclists/in-line skaters located in independent right of ways (e.g., old railroad right of way.)
- Type II: Separate/single –purpose hard surfaced trails for pedestrians or bicyclists-in-line skaters. Typically located within road right of way.



## Recreational Use Location Map



- |                                   |                                      |
|-----------------------------------|--------------------------------------|
| 1. Evans Park                     | 17. Tecumseh Acres Elementary School |
| 2. Standish Dam                   | 18. Cal Zorn Recreation Center       |
| 3. Patterson Elementary School    | 19. Indian Crossing Trails           |
| 4. Patterson Park                 | 20. Aden Mead Park                   |
| 5. Tecumseh High School           | 21. John W. Smith Park               |
| 6. Douglas W. Bird Park           | 22. Community Pool                   |
| 7. Tecumseh Middle School         | 23. Hantz Golf Course                |
| 8. Herrick Park Elementary School | 24. Raisin Valley Golf Course        |
| 9. Sunset Park                    | 25. Ten Pin Bowling Alley            |
| 10. Adams Park                    | 26. Kiwanis Trail                    |
| 11. Satterthwaite Park            | 27. AJ Smith Recreation Center       |
| 12. Elliott Park                  | 28. Hotrum Park                      |
| 13. Beardsley Park                |                                      |
| 14. Occidental Street Site        |                                      |
| 15. Westhaven Site                |                                      |
| 16. Tecumseh Park                 |                                      |

## Additional Recreation Area Inventory

The **Kiwanis Trail** is a non-motorized path stretching 8 miles from downtown Adrian to the intersection of Green Road and Ives Road just south of Tecumseh. It is scheduled to extend into Cal Zorn Recreation Center within the city limits beginning spring 2022. This resource is overseen by the **Kiwanis Regional Trail Authority**.

The **Hayden Mill Building** is located at 703 E. Chicago Boulevard. The building is home to the Tecumseh Senior Center and Way of Life Yoga studio. In addition, the Tecumseh Paddling Company is located adjacent to the building on Globe Mill Pond.

The **Tecumseh Center for the Arts** is located at 400 N. Maumee Street. The theater seats over 500 guests and offers a variety of events ranging from community productions to national touring shows.

**Tecumseh District Library** is located at 215 N. Maumee Street and services Tecumseh and the surrounding townships.

**Tecumseh Community Pool** is attached to Tecumseh Middle School on Maumee Street. This indoor swimming facility offers a variety of aquatic classes for all ages.

Just one mile south of Tecumseh is the **Ives Road Fen Preserve**. Sprawling 703 acres, this wet, spring-fed fen blends into floodplain forest to create an unusual and rare ecological community. This area is overseen by The Nature Conservancy.



## Schools

### **Herrick Park Intermediate Learning Center**

600 Herrick Drive  
Tecumseh, Michigan 49286

Herrick Park is one of four elementary schools in the Tecumseh School District. This neighborhood school is situated on 13.6 acres and services children grades 3<sup>rd</sup> – 4<sup>th</sup> that live in the northeast area of Tecumseh. Recreational amenities include: 10 swings, 1 slide, 2 basketball hoops, ball fields, 2 plastic climbing stations, 2 park benches and paved parking and an indoor gymnasium.

### **Patterson Intermediate Learning Center**

401 N. Van Buren Street  
Tecumseh, Michigan 49286

Patterson School is one of four elementary schools in the Tecumseh School District. This neighborhood school is situated on 8.7 acres and services children grades 3<sup>rd</sup> – 4<sup>th</sup> that live in the west district of Tecumseh. Recreational amenities include 3 plastic climbing stations, 22 swings, 1 ladder, 1 slide, 2 metal climbers, 1 soccer field, and a walking path complete with fitness stations, paved parking and an indoor gymnasium.

### **Sutton Early Learning Center**

2780 Sutton Road  
Adrian, Michigan 49221

Sutton School is one of four elementary schools in the Tecumseh School District. The school is located just south of Tecumseh, situated on 10 acres and the student body is made up of grades young 5s – 2<sup>nd</sup> grade. Recreational amenities include: 18 swings, 3 slides, 1 basketball hoop, 2 soccer fields, 1 plastic climber, 1 wooden climber, 2 metal climbers, 1 ladder, 5 picnic tables, 4 park benches, one walking path, paved parking and an indoor gymnasium.

### **Tecumseh Acres Early Learning Center**

600 Adrian Street  
Tecumseh, Michigan 49286

Tecumseh Acres is one of four elementary schools in the Tecumseh School District and services children grades young 5s – 2<sup>nd</sup> grade. This neighborhood school is located on the southwest side of Tecumseh and is situated on 12 acres. Recreational amenities include 2 ball fields, 36 swings, 2 metal climbers, 2 ladders, 2 wooden climbers, 2 plastic climbers, 1 spring toy that accommodates four riders, 1 tire climber, 1 slide, 4 basketball hoops, 2 benches, paved parking and an indoor gymnasium.

**Tecumseh Middle School**  
307 N. Maumee Street  
Tecumseh, Michigan 49286

Tecumseh Middle School services students in grades 5-8 and is located near the center of Tecumseh on 25 acres. Recreational amenities include: 1 lit baseball diamond, 1 softball diamond, 1 lit football field, 1 six-lane track, 1 plastic climber, 2 swings, 6 basketball hoops, 9 benches, 1 walking path, paved parking and 2 indoor gymnasiums.

**Tecumseh High School**  
760 Brown Street  
Tecumseh, Michigan 49286

Tecumseh High School is located on the west side of Tecumseh and services students in grades 9-12. The school is situated on 91 acres which includes their athletic complex. Recreational amenities include: 1 soccer field, 1 soccer practice field, 1 baseball diamond, 1 lacrosse field, 1 lacrosse practice field, 8 tennis courts, 1 lit football field, an 8-lane track, 1 long jump pit, 1 shot put ring, paved parking, an indoor gymnasium, one weight room and one wrestling area.

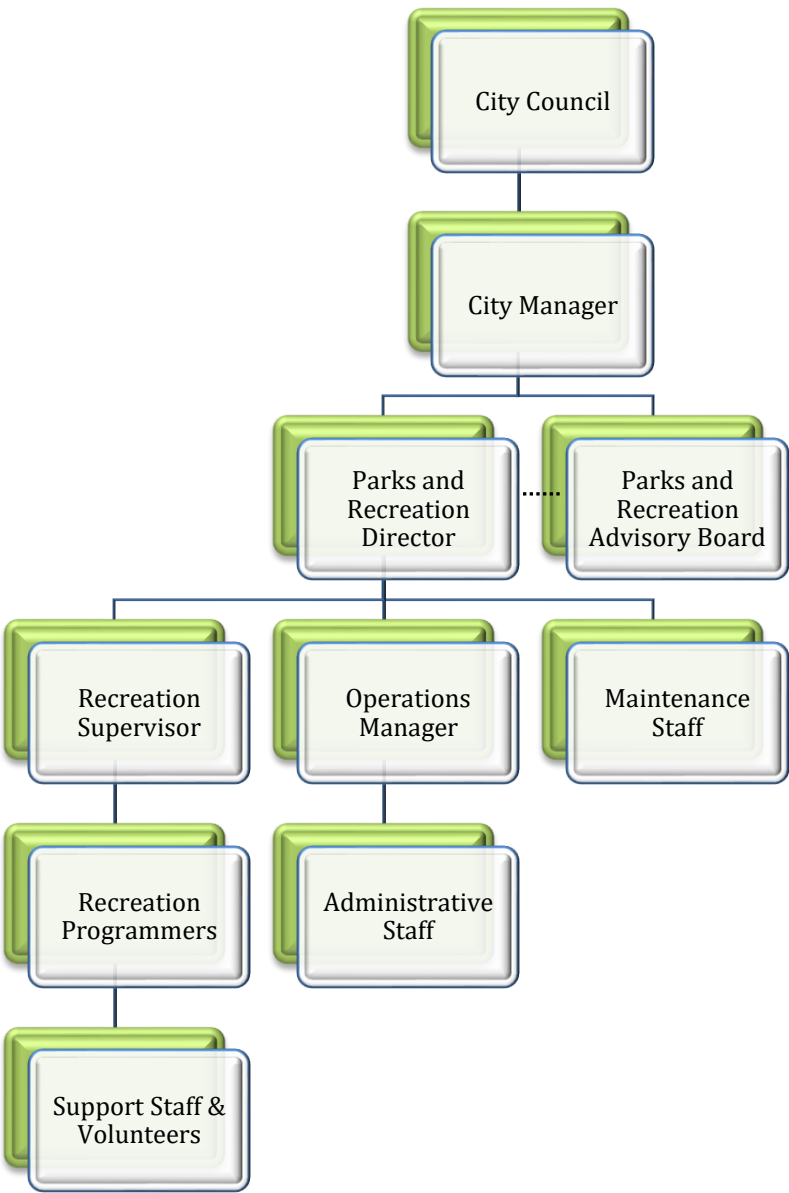
## **Personnel**

A Director, Recreation Programmers, Operations Manager, Administrative support staff, Maintenance staff, and 12 seasonal part-time employees staff the current Parks and Recreation Department. Tecumseh's Parks and Recreation Department also has an Advisory Board consisting of five city residents that each serve 3-year terms. The board has a chairperson, secretary, and three at-large members. The Advisory Board received authorization to act as the City Recreation Board and exercise such powers as set in Act 156 of the Michigan Public Acts of 1917. The Advisory Board meets quarterly and focuses on the following objectives:

- Recommend general policies in regards to parks and recreation to city council
- Establish a sound fiscal plan to achieve recreation goals
- Provide for an adequate system of recreation facilities and areas
- Determine the long-range recreation goals of the city and work toward the achievement of those goals
- Provide a communicative link between the citizens and the government body

The Parks and Recreation Director and the Parks and Recreation Advisory Board serve as an advisory body to the City Manager and the City Council on the development, management and maintenance of parks, recreational programs and services. Together, the Director and the Advisory Board are tasked with the responsibilities of planning, constructing, maintaining and administering all city parks.

# Administrative Structure



## 2021-2022 Parks and Recreation Budget Summary

*Includes park and department operations, maintenance and recreation programming*

Revenues	2021-2022
Registrations	\$58,375
Activities/Events	\$13,500
Building Rentals	\$50,000
Park Rentals	\$3,000
Miscellaneous	\$250
Contributions/Sponsorships	\$4,750
General Fund	\$299,454
<b>Total Revenues</b>	<b>\$429,329</b>

Expenditures	2021-2022
Administration	\$235,216
Utilities	\$72,630
Park & Building Maintenance	\$52,300
Equipment Maintenance	\$25,250
Recreation Supplies	\$33,100
Miscellaneous	\$1,750
Property & Liability Insurance	\$9,083
<b>Total Expenditures</b>	<b>\$429,329</b>

### Funding Sources of Parks and Recreation Budget

Tecumseh's Parks and Recreation budget is derived from a variety of sources including: Federal grants, State of Michigan grants, donations, and City of Tecumseh general fund contributions. The city also has a capital improvement budget that select projects are included annually for funding as available. The budget is derived from department-generated revenues such as building and facilities rentals, pavilion and picnic shelter rentals, team fees, program fees, and concessions sales. Community partners, contributions, gifts, and fundraising are also contributing facets of the Parks and Recreation annual budget.

## Capital Improvement Schedule

*All proposed capital improvement projects are subject to available funding*

CITY OF TECUMSEH							
Capital Improvement Projects							
		Parks and Recreation Department					
Project Description	Year of Proposed Projects and Estimated Costs						Funding
	2021/2022	2022/2023	2023/2024	2024/2025	2025/2026	2026/2027	Source
Resurface lot – Tec. Park		\$38,000					GF O SA FA
ADA boat launch		\$50,000					GF O
Baseball fields – refurbish	\$40,000						GF O SA FA
Tennis courts			\$200,000				GF O
Evans Park upgrades				\$128,000			GF O
Splash Pad improvements	\$100,000						GF O SA FA
Playground – Cal Zorn					\$72,500		GF O SA FA
Playground – Tec. Park					\$58,000		GF O
John W. Smith Park						\$300,000	GF SA O
Aden Mead – replace bathrooms				\$150,000			
<b>Total Costs</b>	\$140,000	\$88,000	\$200,000	\$278,000	\$130,500	\$300,000	

### Funding Sources Key

Federal Aid: FA  
 General Fund: GF  
 State Aid: SA  
 Other: O



## Community Relationships

The City of Tecumseh is fortunate to have a wide array of community organizations, private entities and citizens that support Tecumseh's Parks and Recreation Department through monetary donations, contributions and volunteerism. The Department is always looking for opportunities to partner in order to provide more resources and services to the community.

The *Lenawee Community Foundation* (LCF) is dedicated to enhancing the quality of life of the citizens of Lenawee County. The foundation focuses on identifying and addressing current and anticipated community needs and raising, managing, and distributing their funds for charitable purposes in the area of civic, cultural, health, educational, and social services. The LCF has supported many of the department's projects over the years including the Splash Pad at Cal Zorn Recreation Center, the non-motorized pathways throughout the community, playground equipment, sports equipment, and the AJ Smith Recreation Center.

*The Elizabeth Ruthruff Wilson Foundation* has underwritten the Parks and Recreation Department's Music in the Park Summer Concert Series. Because of their monetary donation, area residents are able to enjoy free concert performances on the third Thursday of June, July, August, and September in Tecumseh.





*Busch's* grocery store also supports the Music in the Park program by setting up a refreshment station during the concerts and donating all proceeds to the Parks and Recreation Department. In addition, they also supplied snacks and refreshments for the department's Easter egg hunt, and preschool parties.

*Consumers Energy* is another strong community partner relationship. Donations include funding for non-motorized pathways, trees and program support.



Local restaurants and area businesses are also regular supporters of our programs, leagues and special events throughout the year. *Tuckey's Big Boy*, *Basil Boys*, *Tecumseh Brewing Company* to name a few.

The Parks and Recreation Department has also formed a strong partnership with the *Kiwanis Club of Tecumseh*. Besides supporting many of our children's programs, the Kiwanis Club was instrumental in the creation of Douglas Bird Memorial Park, located on Maumee Street. Named in honor of a club member, the Kiwanis constantly upgrade this scenic park. They have planted trees, repaired the stream bank, secured funding for a children's playground and organize park clean up days throughout the year. The Kiwanis Club has also assisted with the creation of several trails in Bird Park and has been involved in the removal of invasive species throughout the forested areas.

Many other partnerships have also been forged. The *Rotary Club* of Tecumseh donated several thousand dollars specifically for the creation of the Splash Pad, located at Cal

Zorn Recreation Center and assists with park maintenance at Hotrum Park. Local Boy Scout troops frequently contact the Parks and Recreation Department to volunteer their services. The Parks and Recreation Department has partnered as a beneficiary for many Eagle Scout projects. Additionally, the Scout Cabin, a meeting place for many Boy Scout and Girl Scout troops, is located in Elliot Park.

Area organizations also play a part in some of the Parks and Recreation Department programs. For example, the *Connecting Lenawee Committee* is a consortium of local government representatives planning for the preservation of green space and the construction of an interconnected non-motorized trail way from the City of Adrian north through Raisin Township, the City of Tecumseh, Tecumseh Township, Clinton Township, the Village of Clinton, and the Village of Manchester. The Parks and Recreation Department is represented on the committee and shares the common goal of connecting the surrounding area with non-motorized trail ways.



The Parks and Recreation Department also works with the *River Raisin Watershed Council* (RRWC). The RRWC is a nonprofit membership organization with a constituency of individuals, businesses, municipalities and community groups seeking to protect the natural resources of the watershed. The Parks and Recreation Department has hosted River Clean up Days and distributes information about the RRWC at the AJ Smith Recreation Center.

Our U12 and U15 spring and fall soccer leagues are planned with neighboring communities throughout Lenawee, Washtenaw, and Monroe Counties; by working together we created our own regional travel soccer league. We also collaborate with Adrian College, Siena Heights University, Lenawee Youth Lacrosse, Betta Lax, and Tecumseh High School to offer baseball, softball, soccer, volleyball, basketball, and lacrosse camps.

The Parks and Recreation Department welcomes volunteers and has been fortunate to receive countless hours of volunteered time, compliments of the generous people in our

community. The Builders Club is a youth organization, providing children at the Tecumseh Middle School the opportunity to explore giving back to their community. Each year, the Builders Club assists the Parks and Recreation Department with our preschool parties. During the parties, the students engage the preschool children with games, crafts, storytelling and much more. Many of our sports programs also rely on volunteers. Each season, we ask parents to coach soccer, basketball, tennis, flag football, and floor hockey. Many community members volunteer to help plant native plantings as well as trees with the department and ReTree Tecumseh.

Tecumseh Public Schools is an invaluable partner of the Parks and Recreation Department. We hire high school students as referees and officials for our programs. Varsity coaches and teams assist the department in facilitating youth camps. The department works with the athletic department to provide space for team banquets and as a satellite host site for youth basketball tournaments.

Other community partners include the Tecumseh Paddling Company, ReTree Tecumseh, Tecumseh Jazzercise, River Raisin Beekeepers, Windy Rock Farms, Tecumseh District Library, the Tecumseh Area Chamber of Commerce, the Tecumseh Police Department, Tecumseh Center for the Arts, Community Arts of Tecumseh, Communities in Schools of the Tecumseh Area, the Central Business Association, Lenawee's Child, Great Start of Lenawee, Adrian College, and Lenawee Intermediate School District.

## **Public Input Process**

Public input for the Parks and Recreation Department Five Year Plan was gathered using a variety of methods. The Parks and Recreation Director was a guest speaker at the Tecumseh Kiwanis Club and asked members to fill out a survey. Surveys were available at the Parks and Recreation Department for all visitors to fill out and a link to the survey was posted on the City of Tecumseh's home page at [www.mytecumseh.org](http://www.mytecumseh.org). The link was also posted on the City of Tecumseh's Parks and Recreation Facebook page and was included in both the Tecumseh Herald and The Daily Telegram – newspapers with local and county-wide distribution. It was also sent to several service clubs at Tecumseh Middle School and Tecumseh High School. Finally, the survey was sent out using Constant Contact to the 1,168 emails on our list. The department welcomed comment during Parks Advisory Board meetings and hosted public forums. The director also sought input from stakeholders via focus groups most notably with Little Indian Preschool. The next page contains a copy of the actual survey and the following data reflects the responses of 218 answered surveys.

# *City of Tecumseh* **Parks & Recreation**

## Public Opinion Survey – for 5 year plan

Please indicate your age by circling one of the following:

<b>0-18</b>	<b>19-25</b>	<b>26-35</b>	<b>36-45</b>	<b>46-55</b>	<b>56-65</b>	<b>66-75</b>	<b>76 and above</b>
-------------	--------------	--------------	--------------	--------------	--------------	--------------	---------------------

Do you live in the City of Tecumseh?

Yes ☐ No ☐

If you visited City of Tecumseh parks during 2015: Did you like the parks?

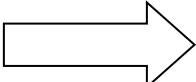
Yes ☐ No ☐

Do the parks need improvements?

Yes ☐ No ☐

If the park(s) need improvements, what do you suggest? Please circle all that apply.

- Playground improvements
- Shelter improvements
- Soccer Field improvements
- Baseball Diamond improvements
- Trail improvements
- Skateboard Park improvements
- Tennis Courts improvements
- Cal Zorn Park Splash Pad addition
- Landscaping improvements
- Other:

PAGE 2 



Did you or a family member participate in one of our recreational activities, events or sports leagues within the last 5 years?

Yes ☐ No ☐

If you or a family member participated in one of our recreational activities, events or sports leagues, how could they be improved?

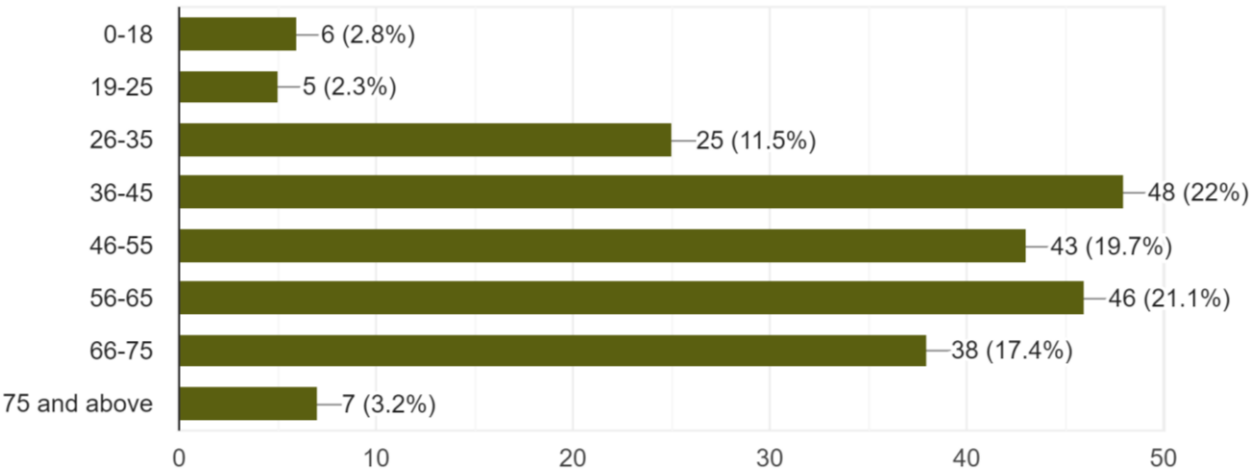
What new activities, events or amenities would you like to see the Department offer?

Do you have any addition comments, positive or negative, for the City of Tecumseh Parks and Recreation Department? We appreciate your valuable input.

# Department Survey Results

Please indicate your age.

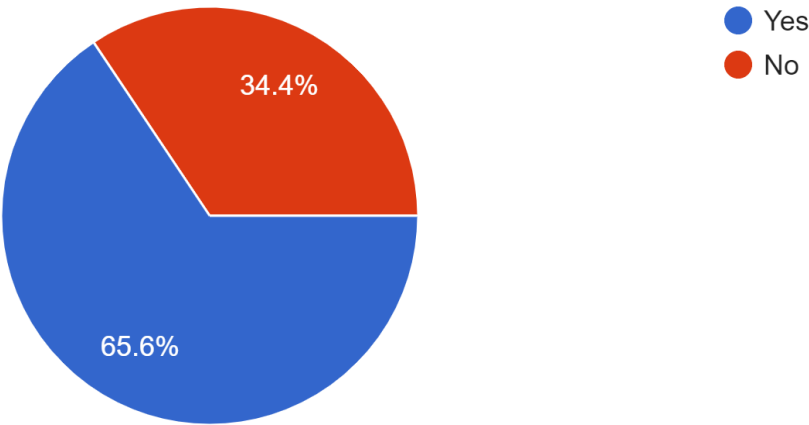
218 responses



218 surveys were collected

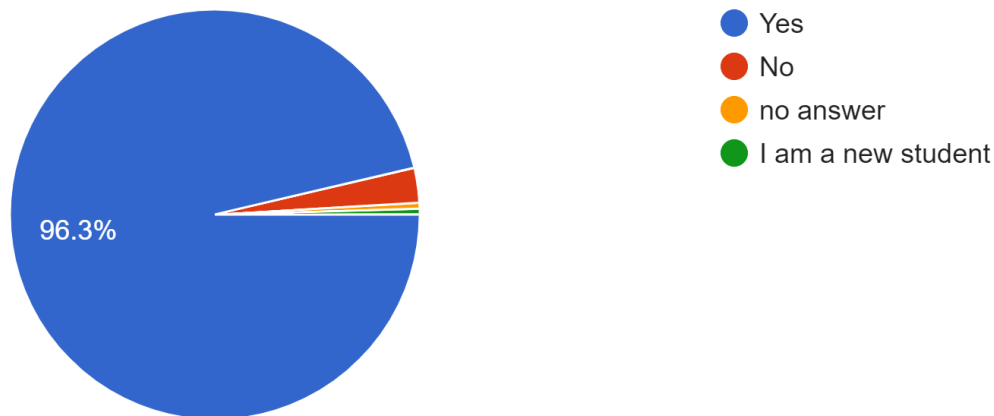
Do you live in the city limits of Tecumseh?

218 responses



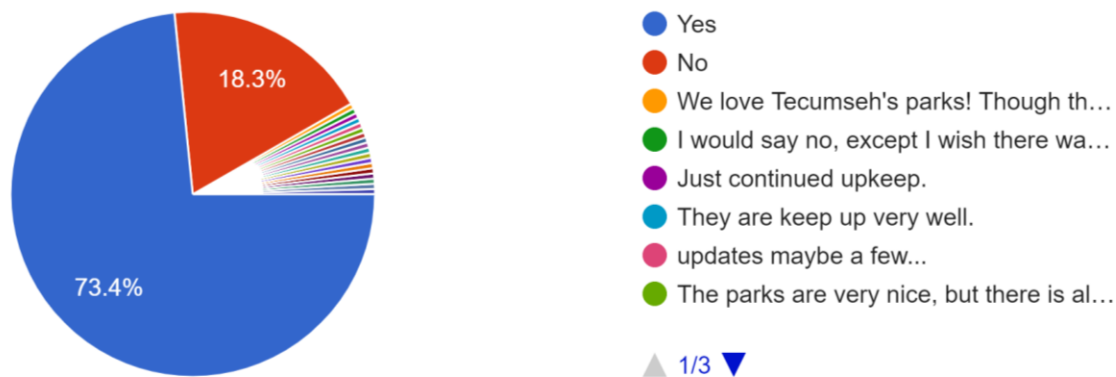
If you visited City of Tecumseh parks within the last 5 years, did you like the parks?

218 responses



Do the parks need improvements?

218 responses

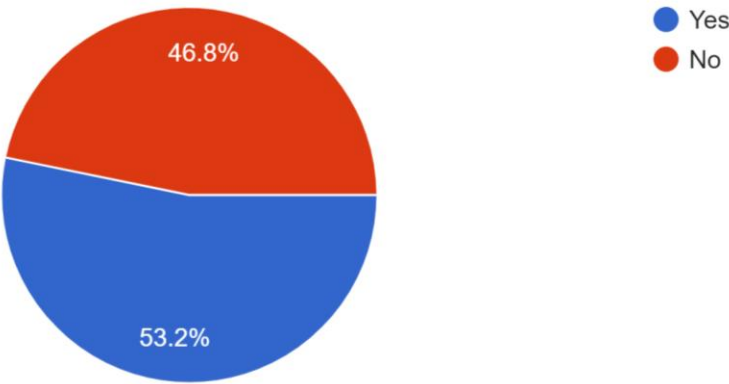


**Question 5: If the Parks need improvements, what do you suggest?**

Playground Improvements: 71 (32.6%)  
Shelter Improvements: 56 (25.7%)  
Soccer Field Improvements: 15 (6.9%)  
Baseball Diamond Improvements: 23 (10.6%)  
Trail Improvements: 95 (43.6%)  
Skateboard Park Improvements: 21 (9.6%)  
Tennis Court Improvements: 34 (15.6%)  
Cal Zorn Splash Pad: 53 (24.3%)  
Landscaping Improvements: 56 (25.7%)  
None: 10 (4.6%)  
Bathrooms: 3 (1.4%)

Did you or a family member participate in one of our recreational activities, events, or sports leagues within the last 5 years?

218 responses





## Public Opinion Survey Comments

**Question 7: If you or a family member participated in one of our recreational activities, events, or sports leagues, how could they be improved?**

AGE	RESPONSE
0-18	None
19-25	Better tot instruction or smaller group sizes; better restrooms; event was fine; better seating, fields, parking, refreshments, shade
26-35	Lower coach to player ratio; better tot instruction or smaller group sizes; more toddler times/days in gyms; more involvement and excitement from the programmer
36-45	Hired coaches; posting schedules online; more skill-based teaching; good – although would like more for seniors in the AM
46-55	Restrooms; more open gym times on the weekends at rec center
56-65	Seating, fields, parking, refreshments, shade; more info sessions like National Parks talk; no complaints – well organize and well run
66-75	More family nature activities; better room or facility for yoga; Coffee with a Naturalist – very informative!
75 +	none

**Question 8: What new activities, events, or amenities would you like to see the Department offer?**

AGE	RESPONSE
0-18	I don't really know what is offered
19-25	Dog park; more little kid stuff 0-10; bathrooms closer to splash pad/pavilion area
26-35	Tennis for kids; day time summer activities for kids with working parents; mother-son dance; flag football; you're doing a great job!; more for toddler ages
36-45	Large play structure; observation deck by street art trail; bigger dog park; running club; more family programs; kayaking events; rock crawler events; lifeguards at pit
46-55	Special needs children's activities; more cornhole leagues; more bike trails; shooting range; frisbee golf; drop-in basketball; outdoor fitness; bike lanes; e-sports; 5ks; Keep doing what you're doing!
56-65	Adult dance lessons for couples; pickleball tournaments; craft classes; guided nature hikes; community clean-up events; bike trails, parking, bike lanes;
66-75	Better care of dog park; walking trail around Cal Zorn Park; senior leagues; safety town program for kids; outdoor pickleball courts; chess tournaments
75 +	Bathrooms by splash pad; keep senior fitness class; craft classes

**Question 9: Do you have additional comments, positive, or negative for the City of Tecumseh Parks and Recreation Department? We appreciate your valuable input.**

AGE	RESPONSE
0-18	Parks look nice in passing – trails need improvements
19-25	Pretty good just add a little more; smoking area to be more inclusive; I love our parks and am proud to show them to nonresidents
26-35	Staff is always very friendly; fathers and daughters are celebrated but mothers and sons are not; remove vegetation around waterfront at the pit; bigger splash pad
36-45	There are great people staffing parks and rec; we love the wide variety of parks; outdoor pickleball courts; would like to see a mountain bike system; find more ways to use outdoor spaces; more monitoring of Tecumseh Park; department is doing a great job with the resources they are given. It would be nice to see a full-time recreation supervisor added to allow for more programming. It's difficult to have a building open over 60 hours per week plus run 13 parks with one full time director and 2.5 part time people. It's amazing they do what they do so well!
46-55	I think overall our parks are very, very good but always room for improvement; wish the cost wasn't more for those of us that live in the township; the improvements and updates lately have been amazing; we LOVE walking the trail but it is muddy in spots after it rains; In the last year or two there have been a lot of positive improvements and changes to the parks and rec system. You guys are doing great!; better maintenance of the trails; please add on to splash pad; I think they are undervalued. Need to bring more awareness. I work here and never knew there were 13 usable parks. I have something special at each of them to appreciate now. Keep up the good work. Like to see new improvements.
56-65	I love the parks and Indian Trail so much I moved here!; Thank you for providing our community quality programs and recreation opportunities; Sidewalks/bike path from Bonner Hills are needed; Our skatepark needs lots of improvement. We use the one in Adrian. But would much prefer to stay in our own town; improve signage on trail and identify plants; maybe more outside movies; I like what is offered. The communication seems off and I rarely know what is happening; I use one or a few of the trails, bike path/ parks and sidewalks almost daily. Very pleased with all; Great work on pit beach and boat launch improvements.
66-75	I would like to see a dog leash law inside the parks, on city park property; We primarily use the Pit and the trails and really appreciate how much maintenance; You are doing a great job!; our Parks and Recreation are doing a great job. Thank you for listening to our suggestions and keep up the good work!; Beautiful city with great parks; I think the park director is doing a good job with the resources she has to work with; Better control of people obeying the no bike rule on Indian Trail & leashed dogs; Keep up the good work!
75 +	I would like to see a park with paved walking, biking and running paths. It should have trees, benches, and gazebos. It should be located in the city so people can walk to it.

## Goals and Objectives

The purpose of the City of Tecumseh Parks and Recreation Master Plan is to identify goals and objectives for the next five years. The goals and objectives are informed by the needs expressed by the public, City officials, and department staff. Additionally, they also consider demographics, current growth, anticipated development, natural and physical resources, and parks and recreation trends.

***The overall goal for the City of Tecumseh Parks and Recreation Department is to provide the opportunities and resources necessary to offer a variety of quality recreation activities and facilities for people of all ages and abilities.***

Five main focus areas are identified for achieving this goal:

- 1. Park and Facilities Development: Continue to develop, improve and expand Tecumseh's existing parks and facilities.**
- 2. Recreation Programming: Continue to expand and improve the scope and quality of recreation programs and services.**
- 3. Park Maintenance: Continue to maintain the parks and facilities throughout park system, ensuring quality, enjoyable parks and recreation opportunities throughout Tecumseh.**
- 4. Non-motorized pathways: Continue to expand and develop trail system.**
- 5. Communication and administration: Continue to improve financial sustainability and communication.**

## **Action Plan**

- 1. Park and Facilities Development: Continue to develop, improve and expand Tecumseh's existing parks and facilities.**

### **Globe Mill Pond**

**703 E. Chicago Boulevard**

Located on Tecumseh's east side, Globe Mill Pond is one of the City's most used water features offering scenic views, canoe and kayaking, wildlife viewing and ample fishing opportunities. The Parks and Recreation Department would like to install a universally accessible fishing pier and universally accessible public boat launch at Globe Mill Pond. This project would use general funds, donations and appropriate grant funding.

### **Adams Park**

**309 E. Chicago Boulevard**

Adjacent to city hall, this park is an acre of passive recreation. It is home to 5 benches, 2 picnic tables, dog waste station, and restrooms accessible in city hall. Adams Park hosts Music in the Park every summer. A stage or amphitheater would be an excellent addition for Music in the Park as well as Movies in the Park. Many other community groups would benefit from an outdoor performance space. General funds, donations, grant funding will achieve this aim.

### **Beardsley Park**

**E. Chicago Boulevard (South of M-50 across from Satterthwaite Park)**

Located on the east side of Tecumseh, Beardsley Park is an undeveloped 8.75-acre park with a scenic view of the River Raisin. It provides critical flood plain for the River Raisin. This may be a location for mountain bike trails or a disc golf course. Beardsley Park would also be an ideal location to create additional personal watercraft access points to the River Raisin. These projects would use general funds, donations, volunteers, and appropriate grant funding.

### **Aden Mead Park**

**211 S. Occidental**

Tucked into the west side of town, Aden Mead Park is a wonderful park for families. It is home to a baseball diamond, play structure, basketball hoop, bathroom facilities, paved parking, picnic shelter with tables, and large open grass area used for a full-size soccer field. In order to better maintain the athletic facilities, a storage barn for equipment would be an asset as current storage capabilities onsite are limited. The bathroom facilities need to be replaced as the original manufacturer is no longer in business, creating a logistical nightmare of properly fixing issues related to aging infrastructure. This would be an ideal location if the current tennis courts at

Satterthwaite Park (703 E. Chicago Blvd) ever needed to be relocated. New outdoor pickleball courts would also be a welcomed addition if that were to happen.

**Cal Zorn Recreation Center**  
**300 E. Russell Road**

Countless families use the Splash Pad, an interactive water feature, located at Cal Zorn Recreation Center during the spring and summer. Located adjacent to the Splash Pad is a large children's playground, providing additional play opportunities to park visitors. Noted on the survey, 53 responses were tallied for splash pad improvements and 71 for playground improvements. Adding new water features, installing a shade canopy, more seating, and landscaping the Splash Pad would enhance this well used park feature. Ideally, installing a second similar-sized Splash Pad designed for toddlers and revamping the existing Splash Pad for those 4 and up would serve younger kids and also increase safety by separating ages. A large, updated play zone/play structure that incorporates universal accessibility would also be a great improvement at Cal Zorn Park. A restroom in this quadrant of the park would also improve park visitor's experience. In addition, enhancing the Dog Park with obstacle features will offer our four-legged friends activities as well. A paved walking path around the perimeter of the park would provide another healthy and active recreation resource. Parks and Recreation department would use general funds, seek donations and appropriate grant funding to accomplish these goals.



**Douglas W. Bird Kiwanis Memorial Park**  
**400 N. Maumee Street**

Located in the northeast quadrant of Tecumseh, Douglas W. Bird Kiwanis Memorial Park (known as Bird Park) is a picturesque 20 plus acre park. The most visible section of the park has a play structure, swings, lit footpath, benches, picnic tables, grills, and a bridge that spans Evans Creek. The remainder of the park is wooded. Creating an interactive music park comprised of outdoor instruments designed for such use would

connect Bird Park to the Tecumseh Center for the Arts (TCA). This music garden would be a collaborative effort with the TCA and lead into the existing MaryJo Mensing Sculpture Garden as well as the TCA Street Art Trail. Removing invasive species and restoring the wooded area has become a collaborative community project. Tecumseh Kiwanis Club, Tecumseh Middle School students and faculty, along with Lenawee Intermediate School District students are working to clear the invasive species and maintain footpaths. The park is located directly across the street from Tecumseh Middle School, an ideal location for an outdoor classroom. To the east, across Evans Creek, is Herrick Park Intermediate Learning Center. Connecting Bird Park to the elementary and across the canal to Indian Crossing Trails Park via open-span bridges would increase connectivity of our green spaces and improve the trail system. The Parks and Recreation Department would use general funds, seek donations, Eagle Scout projects, and appropriate grant funding to continue the removal of invasive species, install benches, and site furnishings.

### **John W. Smith Park 810 N. Evans Street**

Located in Tecumseh's north quadrant, John W. Smith Park is the newest edition to the park system. This park is home to the AJ Smith Recreation Center. John W. Smith Park has several wooded areas and is home to a small pollinator garden. A playground or natural playground – with elements made of natural materials such as rocks, logs, tree cross sections – would be a great addition to the parks system on the north side of town. A walking path around the perimeter should be considered. If the rec center were ever to expand, a weight room or racquetball courts would be a well-used addition. When the land that is now John W. Smith Park was gifted to the City, the Parks and Recreation Advisory Board worked with planners and created a master plan for the park. Implementing recreational features in the master plan should continue. General funds, donations, community volunteers and appropriate grant funding are all resources that can be used to assist with this project.

### **Indian Crossing Trails**

#### **Entrances at Standish Dam from Burt Street and at Globe Mill Pond (703 E. Chicago Boulevard)**

This 144-acre forested track of land also includes Standish Dam at the Burt Street trailhead. The park is laced with walking trails that are accessible from the Burt Street entrance as well as from Chicago Boulevard (M50). Continued invasive species removal and management will be key for this park. Trail and culvert maintenance will also need to be addressed. Additional foot bridges and boardwalks will improve the trail treadway and also minimize impact on the surrounding vegetation.

Indian Crossing Trails is steeped in lore, legends and history. The Park was named because of the two trails that converge in the green space, that were used for many years, perhaps centuries, by Native American Indians as they migrated through the area. The



Department should explore the cultural history with universities and Native American tribes in the region and document findings to preserve and share this history.

**Tecumseh Park**  
**403 Adrian Street**

Tecumseh Park, located on the southwest side of the city, offers many recreational opportunities. The park features a small spring fed lake ideal for swimming and fishing, bathroom facilities, seasonal concession stand, two sand volleyball courts, children's play areas, a picnic shelter, grills, paved parking, and a sledding hill.



Improvements to the park should include updating the children's play areas, incorporating universal accessibility. In addition, Tecumseh Park may make an ideal location for a 9-hole disc golf course or orienteering course. Adding horseshoe pits or a bocci ball court would supplement the other recreation activities available. The parking area is in need of repaving and additional parking should be evaluated. Remodeling the existing bathhouse for more efficient and functional use needs to be considered. The Parks and Recreation Department would use general funds, donations and appropriate grant funding to accomplish improvements at Tecumseh Park.

The City of Tecumseh has an easement that if developed could provide park users more defined access to Tecumseh Park from Cairns Street from the west side of the park. The Department would use general funds, donations, volunteers and appropriate grant funding to achieve a west side entrance to Tecumseh Park.

**Hotrum Park**  
**100 W. Shawnee Street**

Hotrum Park is designated for passive recreation and features a gazebo, offering an ideal location for an outdoor wedding. The landscape, lighting, and seating areas throughout

the park need improvement. The Department will continue working with volunteers from the Tecumseh Rotary Club to accomplish the updated landscaping. The Parks and Recreation Department will use general funds, donations and appropriate grant funding to improve Hotrum Park.

**Evans Park**  
**609 N. Evans Street**

This popular fishing spot would be enhanced with improvements to fishing access. A pier with accessibility to all users would be a welcomed addition. The parking area would need improvements and better definition. A unique view of the scenic River Raisin would be even better if the overgrowth and brush were removed along the riverbanks. Since the addition of the Timbercraft Pavilion, weating and waste receptacles need to also be installed – enhancing the setting to enjoy another of Tecumseh’s natural parks and water features. This would also be an ideal location to create additional personal watercraft access points to the River Raisin. This park also contains a large boulder marking the spot of the first homestead in Tecumseh. Creating interpretive signage acknowledging this cultural history would be beneficial. The Parks and Recreation Department would use general funds, donations and seek appropriate grant funding for improvements.

**Satterthwaite Park**  
**703 E. Chicago Boulevard**

The Parks and Recreation Department will work toward improving the children’s play area and in-line hockey rink located at Satterthwaite Park. In addition, improvements to the tennis courts and skate park will add to user’s enjoyment. New playground equipment, in-line hockey goals, additional skate park obstacles along with benches and wind screening for the tennis courts will enhance the location’s recreational opportunities. The tennis courts will need resurfacing in the next 5 years to ensure a safe and playable surface. New tennis net systems would be a needed upgrade at time of resurfacing courts. Repaving the parking area would also enhance the park. The Parks and Recreation Department would use general funds and seek donations and appropriate grant funding to complete these projects.

**2. Recreation Programming: Continue to expand and improve the scope and quality of recreation programs and services.**

In January of 2013, the Lenawee Community Foundation gifted the City of Tecumseh the AJ Smith Recreation Center. This 19,000 square foot facility features two full size



gymnasiums, a 1000 square foot community room, ideal for meetings and private rentals, and is home to the parks and recreation department. The recreation center is bustling with activity throughout the week, facilitating parks and recreation sports programming, adult fitness classes, and meetings. The AJ Smith Recreation Center is also able to facilitate large community events; the recreation center has hosted bridal shows, home shows, annual fundraisers, and craft shows.



The current hours of operation at the recreation center are as follow:

**January through April**

- Monday 5:30 am to 9 pm
- Tuesday 8 am to 7 pm
- Wednesday 5:30 am to 8 pm
- Thursday 8 am to 7 pm
- Friday 5:30 am to 2 pm
- Saturday 8:30 to 9:30am  
& events
- Sunday 8:30 am to 4 pm  
& events

**May through December**

- Monday 5:30 am to 9 pm
- Tuesday 8 am to 7 pm
- Wednesday 5:30 am to 8 pm
- Thursday 8 am to 7 pm
- Friday 5:30 am to 2 pm
- Saturday 8:30 to 9:30 am  
& events
- Sunday 8:30 to 9:30 am  
& events

The department will continue to explore ways to expand hours of operation at the AJ Smith Recreation Center particularly on the weekends. The biggest limiting factor is staffing and number of hours allotted per employee.

Several of the most enjoyed features throughout the parks system are the waterways and green spaces. Residents in the area have the opportunity to enjoy the beauty of nature as they recreate and stay active. The department will look to expand our hiking series and nature-based programming to highlight our park system. Further developing our “Fireside Stories” program and free community events are needed. Noted by survey respondents is the desire for more summer camp and daytime activities for children when school is not in session. Week-long day camps is an area of programming that would not only expand programming but help fill a need. The Parks and Recreation Department will use general funds and seek donations and appropriate grant funding to achieve these objectives.

Adult sports leagues need to be consistent and expanded beyond current offerings of sand volleyball, indoor volleyball, kickball, and 3v3 basketball. Adding a weight room addition to the AJ Smith Recreation Center would fill the gap for weight training. The addition could facilitate station-based weight machines, spin bikes, treadmills and other cardio machines. The Parks and Recreation Department would use general funds and seek donations and appropriate grant funding to meet this objective.



Based on survey results, the department will also look for opportunities to provide additional fitness and craft classes and continue to improve and expand on the slate of programming we currently offer the community. Continuing to seek ways to engage the community in low cost or free events will aid in increasing the department’s presence and profile. The Parks and Recreation Department will use general funds and seek donations and appropriate grant funding to meet this objective.

Successful programs generate income for the Parks and Recreation Department and provide the opportunity to offer additional programming to the community and investment in the parks system. The Parks and Recreation Department will work to increase recreation program participation by reviewing marketing strategies along with the current programming being offered through the department. Seeking donations, appropriate grant funding, and general funds to achieve this objective.

**3. Park Maintenance: Continue to maintain the parks and facilities throughout park system, ensuring quality, enjoyable parks and recreation opportunities throughout Tecumseh.**

Providing a safe and aesthetically pleasing park experience happens because of good park maintenance. Question number five of *City of Tecumseh Parks and Recreation Public Opinion Survey* asked: If the parks need improvement, what do you suggest? Many survey participants noted trails and landscape throughout the park system could use improvement. In order to help make effective and efficient repairs/improvements to trails or ball fields, a utility terrain vehicle would be immensely helpful. Cohesive and consistent signage throughout the parks would be beneficial to trail user experience and better identify public parks.

The Parks and Recreation Department will also ensure safety surfaces at play areas meet regulations (depth and fall zones), and ensure park equipment and facilities are safe, usable and clean. The Department will also continue to comply with Americans with Disabilities Accessibility guidelines, maintain and expand access to waterways throughout the park system, create a trails maintenance plan.

Formalizing an invasive species management program will also benefit our natural areas. Current environmental awareness and conscientiousness requires attention and inclusion into future department decisions. Thoughtful consideration of environmental impacts with new park development projects can be accomplished through assessing stormwater management, erosion, herbicide use, plant selection, and materials used. Incorporating more native plant selections when replanting can help promote native pollinators and birds which can increase passive recreation opportunities. Ensuring quality infrastructure as well as quality cultural and natural resources will allow the department to achieve a higher level of park maintenance and care.

As expressed by respondents, the parks in Tecumseh are well used! The Department will create a formulized equipment acquisition and replacement program. This will include needs, replacement schedule, and acquisition dates for park features, equipment, and the maintenance tools used by the Department to maintain the parks. The Parks and Recreation Department will use general funds and seek donations and appropriate grant funding to accomplish these objectives.

#### **4. Non-motorized pathways: Continue to expand and develop trail system**

The Parks and Recreation Department will continue to work toward expanding non-motorized pathways, trails, and bicycle routes throughout the city. By connecting parks and green spaces with these pathways it will enhance Tecumseh's trail system providing additional recreational opportunities, safe routes for pedestrians, and improves the quality of life in our community. With the recent successful crowdfunding effort to extend the Kiwanis Trail into Cal Zorn Park, the department will need to invest in creating a trailhead in the southeast portion of the park off of Raisin Center Highway. Wayfinding signage, bike parking, bike repair station, ADA accessible pathway from parking lot to the paved trail itself will need to be addressed. In addition, other non-motorized priorities in the next 5 years are as follows:

- Install bike parking throughout park system
- Stripe Russell Road, Occidental Road, Union Street with bike lanes; creating easier and safer access to downtown and the Kiwanis Trail extension
- Install signage denoting bike appropriate trails
- Begin Water Trail designation for the main branch of River Raisin



The Connecting Lenawee Plan is a non-motorized vision for Lenawee County. This tool will be used by communities throughout Lenawee County as a guide to creating and expanding non-motorized pathways. Also staying active in the recently formed Kiwanis Regional Trail Authority (KRTA) will be beneficial to expanding pathways and access

points. The department will continue to work with surrounding communities to achieve these goals. Non-motorized paths also include water trails. Designating and maintaining the main branch of the River Raisin as a Water Trail would increase its use, access, and create yet another recreational resource for the community. The Parks and Recreation Department will use general funds and seek donations and appropriate grant funding to expand and continue to develop Tecumseh's trail and non-motorized pathway system.

#### **5. Communication and administration: Continue to improve financial sustainability and communication.**

The Parks and Recreation Department will work toward improving communication and sharing information with the community by updating the Parks and Recreation Parks and Trails Guide. This well used pocket guide lists all of the parks and trails in Tecumseh and is in need of updating.

Enhancing the landing page by updating the park descriptions and highlighting the department's activities will engage web surfers and may increase park, facilities, and program participation. In addition to upgrading the landing page, the Parks and Recreation Department will continue to use social media tools such as Facebook to share information and communicate with Tecumseh area residents. Newsprint, posters in downtown businesses, Constant Contact emails, and radio advertisement will help amplify our offerings.

Another component to consider is a formalized sponsorship program. This would increase sponsorship of youth sports leagues and could generate new sponsorship opportunities at the AJ Smith Recreation Center.

In addition to sharing information with Tecumseh residents the Parks and Recreation Department will continue networking with other parks and recreation professionals at state and local levels. Moreover, the Department will continue to seek out and take advantage of professional development opportunities.

The Parks and Recreation Department will continue to evaluate fees and programs to increase program cost recovery. Finally, efforts will continue to seek donations and appropriate grant funding to enhance the programs and recreational opportunities offered through Tecumseh's Parks and Recreation Department.



## Projected Action Plan Implementation

*All proposed action plan projects are subject to available funding*

Location/Project	2022	2023	2024	2025	2026
Cal Zorn Recreation Center	Kiwanis bike path trail head	Splash Pad improvements		Playscape	
John W. Smith Park					Park improvements
Globe Mill Pond		Boat launch			
Hotrum Park			Landscape improvements		
Aden Mead			Replace bathrooms; equip. storage		
Satterthwaite Park				Playscape	

## Implementation Strategies

Accomplishing the recommended actions over the next five years requires adequate funding. The City of Tecumseh Parks and Recreation current budget provides a limited amount of funds for development and improvements. This amount will not cover projected expenses involved in the improvement schedule. Therefore, the following strategies are recommended.

### Apply for Federal Funding

At the federal level, the Michigan Department of Transportation (MDOT) funds Transportation Alternatives Program (TAP) through congressional action. This program awards grant funding for project such as bike paths, pedestrian and bicycle safety improvements, and preservation of historic transportation facilities that enhance Michigan's intermodal transportation system and provide safe alternative transportation options.

### Apply for State Funding

At the state level, the Michigan Natural Resources Trust Fund (MNRTF), Land and Water Conservation Fund (LWCF) and the Recreation Passport Grant Program (RP)



continue to be the primary funding sources for parkland acquisition and development. The MNRTF provides funding for the purchase and development of parkland for natural resource-based preservation and recreation.

Grant proposals must include a local match of at least 25% of the total project cost. There is no minimum or maximum for acquisition projects. For development projects, the minimum funding request is \$15,000 and the maximum is \$300,000. The LWCF is a federal appropriation to the National Park Service, who distributes funds to the Michigan Department of Natural Resources and Environment for development of outdoor recreation facilities. The focus of the program has been on trailway systems and other community recreation needs such as playgrounds, picnic areas, skate parks, ball fields, soccer fields and walking paths. Minimum grant requests are \$30,000 and maximum grant requests are \$500,000. The RP minimum request is \$7,500 and maximum of \$150,000 with at least a 25% match. Other funding conducted in partnership with the MDNR is available through other state government divisions, such as Aquatic & Wildlife centered grants as well as Forestry Grants.

### **Other Sources of Funding**

Tecumseh's Parks and Recreation Department will investigate additional sources of funding. Donations, sponsorships, fund-raising events and seeking other sources of revenue are methods that should be employed to raise funds for park acquisition and development. Foundation grants and awards need to be pursued.

## **Demographics**

Demographics play an important role in Tecumseh's Parks and Recreation Department Five Year Plan. Understanding specific population characteristics can assist in achieving our goals and objectives. The following demographic information is provided by the 2020 US Census and 2015-2019 American Community Survey 5-Year Estimates.

### **Average Household Size**

The average number of people per household for Tecumseh is 2.77 persons. That figure is slightly under the average of 2.97 for Lenawee County and also the state of Michigan average of 3.09.

## Population Trends

Year	Population	Increase/Decrease	Percent
1930	2,456		
1940	2,921	+456	18.9%
1950	4,020	+1,099	37.6%
1960	7,045	+3,025	75.2%
1970	7,120	+75	1.1%
1980	7,320	+200	2.8%
1990	7,462	+142	1.9%
2000	8,574	+1,112	14.9%
2010	8,521	-53	.6%
2020	8,680	+159	1.8%

## Regional Population Trends

	Population				
Community	1980	1990	2000	2010	2020
Tecumseh	7,320	7,462	8,574	8,521	8,680
Adrian	21,186	22,067	21,574	21,133	20,645
Blissfield	3,107	3,172	3,223	3,340	3,277
Hudson	2,545	2,580	2,499	2,307	2,415
Clinton	2,342	2,475	2,293	2,336	2,517
Morenci	2,110	2,342	2,398	2,220	2,270
Lenawee County	89,948	91,476	98,890	99,892	99,423

The Regional Populations Trends table compares population counts from 1980 to 2020 for communities near Tecumseh and Lenawee County. Tecumseh's population decreased very slightly from 2000-2010 but made gains from 2010-2020. Fluctuating slightly, the estimated the population of Lenawee County at 99,423 in 2020.

## Age Group Comparisons

The “baby boomers” (birth years approximately 1946-1964) are a more than 25% of Tecumseh’s population. This is a demographic that is looking for active recreation even into their later years. Young professionals – with and without families – are also looking for more and diverse recreation opportunities. Making more of an effort to expand programming for those 20-45 years of age will help fill gaps in service. By taking these age groups into consideration, the department can better position itself and our offerings to accommodate residents.

<b>City of Tecumseh Population</b>	<b>8,680</b>
Under 5 years	601
5 to 9 years	414
10 to 14 years	268
15 to 19 years	633
20 to 24 years	405
25 to 29 years	593
30 to 34 years	318
35 to 39 years	561
40 to 44 years	604
45 to 49 years	721
50 to 54 years	373
55 to 59 years	595
60 to 64 years	529
65 to 69 years	813
70 to 74 years	394
75 +	858

## Gender

According to the Census, Tecumseh has a population of 47.3% men to 52.7% women. Lenawee County has 50.5% men to 49.5% women and the State of Michigan has 49.3% men to 50.7% women.

## Employment by Industry

Utilizing 25% of the workforce, the city of Tecumseh's largest employment industry is educational services, health care, and social assistance as defined by the 2020 US Census. The second largest industry is manufacturing at 22.9%. Ranking third in Tecumseh is the retail industry, making use of 13.4% of the employed population.

## Race

The following chart reflects data in Tecumseh that was collected during the 2020 US Census.

Subject	Number	Percent
<b>RACE</b>		
Total population	8,680	100.0
One race	8,107	93.4
White	7,828	90.2
Black or African American	52	0.5
American Indian and Alaska Native	38	0.4
American Indian, specified	26	0.3
Alaska Native, specified	0	0.0
Asian	54	0.6
Native Hawaiian and Other Pacific Islander	0	0.0
Some Other Race	135	1.5
Two or More Races	534	0.6
<b>HISPANIC OR LATINO</b>		
Total population	8,680	100.0
Not Hispanic or Latino	8,181	94.2

## People with Disabilities

Under the Americans with Disabilities Act (ADA) of 1990 individuals with disabilities include:

- Persons who have mobility impairments
- Persons who have coordination impairments
- Persons who have vision impairments

- Persons who have hearing impairments
- Persons who have difficulty understanding
- Persons who have difficulty communicating
- Persons who have impaired breathing and endurance

According to the 2019 American Community Survey 5-year Estimates, 14.6% of the population in Tecumseh is living with a disability. The Americans with Disabilities Act requires that public facilities accommodate all persons equally. Future park development and park facility renovations will provide the following:

- Ramps, railings, landings and surfaces
- Turning radius for wheelchairs
- Walkways, gates and doorway openings with adequate widths for wheelchair access
- Fully accessible restrooms
- Accessible drinking fountains and picnic tables
- Inclusive play equipment
- Signage for way finding and use instructions

## **Income**

According to the 2019 American Community Survey 5-year estimates, the median household income in Tecumseh in was \$58,428. In comparison, the median household income for Lenawee County was \$53,865 and Michigan's median household income was \$59,584. For all persons living in Tecumseh, 7.7% (+/- 2.2%) were considered below poverty level.

## **Education**

According to the 2019 American Community Survey 5-year estimate, 94.6% of the population 25 years and over have attained a high school diploma or higher (associate's degree/trade school) and 30.2% of Tecumseh's population 25 years and over have attained a Bachelor's degree or higher (graduate and or professional degrees).

# TECUMSEH PARKS & TRAILS





## APPENDIX B1

*Park Features*

	Adams Park	Adrian Mead Park	Beardsley Park	Cal Zorn Recreation Center	Douglas Bird Awards Memorial Park	Elliott Park	Events Park & Monument Park	Hobart Promenade Park	Indian Crossing Trails Park	John W. Smith Park	Peterson Park	Sawtooth Park	Sawtooth Dam	Sunset Street Park	Tecumseh Park
Acres	1	10	8.3	15	23.7	1.4	6.2	1	130	25	1.0	61	57.5	1	25.2
Baseball															
Basketball															
Boat Launch															
Canoe/Kayak															
Cross-Country Ski															
Fishing															
Hiking															
Horseback Riding															
Ice Skating															
Interpretive															
Lighting															
Playground															
Picnic Shelter															
Picnic Table															
Pond															
Public Art															
Public Restroom															
Shade Structure															
Soccer Field															
Tennis															
Trails															
Water Feature															
Wildlife Viewing															
Winter Sports															

### City of Tecumseh Parks & Recreation

You'll find over 300 acres of parkland within Tecumseh, brimming with green space, wildlife, waterways and hiking/biking trails. In addition to proudly overseeing our network of parks, we also offer a full slate of programs, geared toward providing residents in Tecumseh and the surrounding area plenty of recreational opportunities. If you would like additional information regarding our parks or programs, please give us a call!

#### Office Hours

Monday–Friday • 8am–5pm  
517.423.5602

703 E. Chicago Blvd.  
Tecumseh, MI 49286

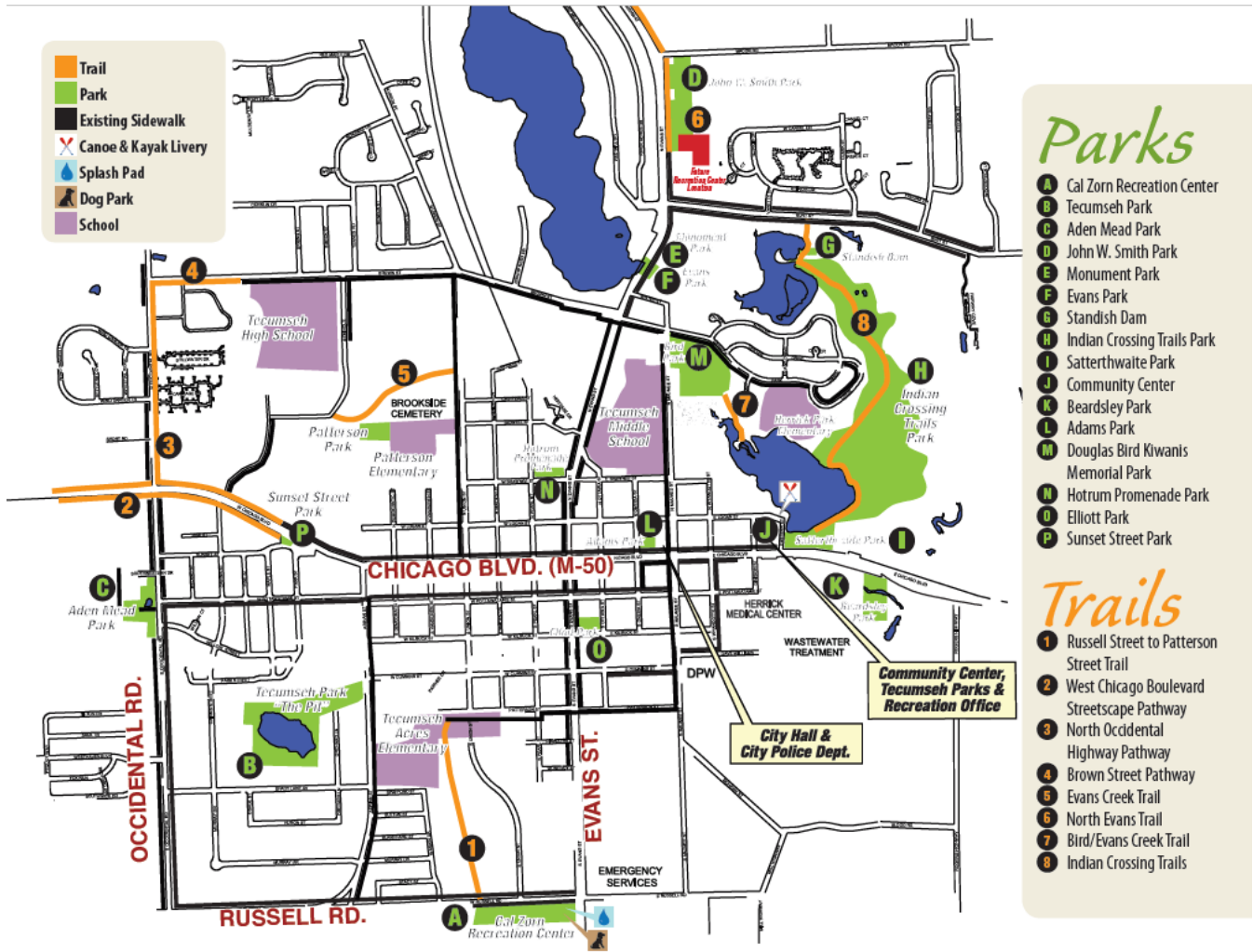
[www.mytecumseh.org](http://www.mytecumseh.org)



Photo submitted by Lydia Waynick.

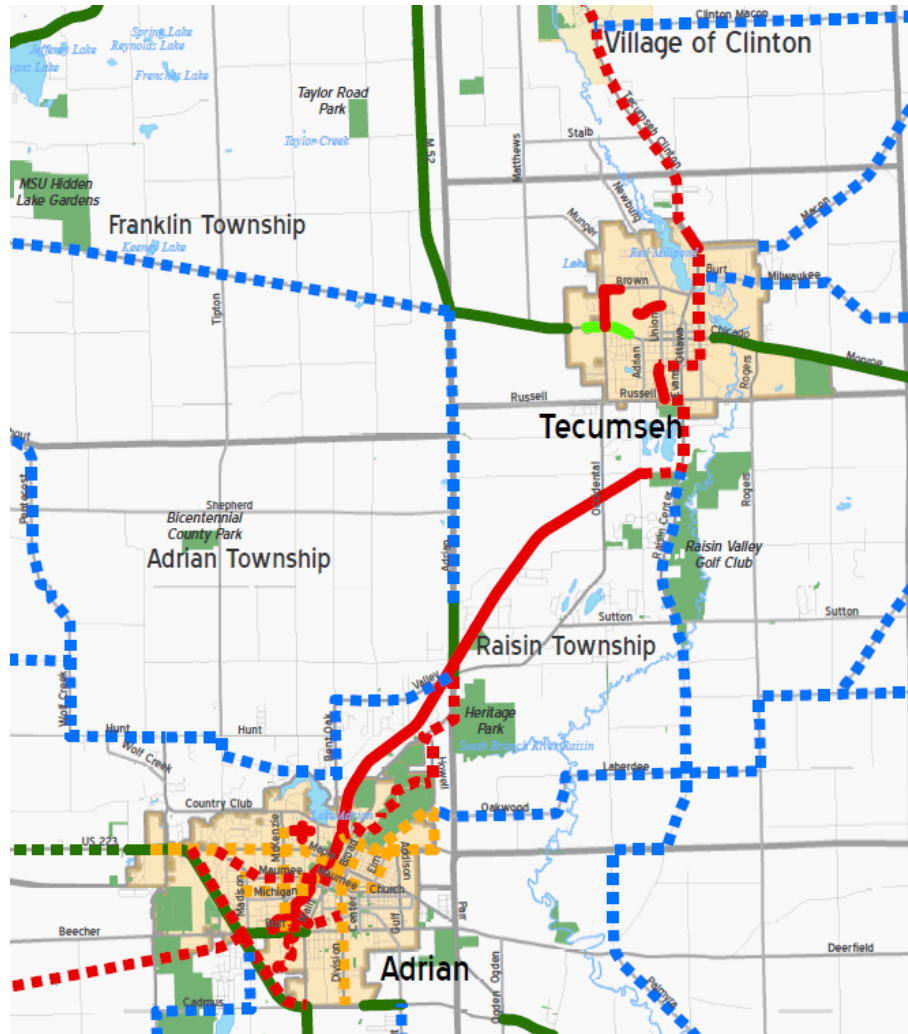
City of  
**Tecumseh**  
**Parks & Trails**  
[www.mytecumseh.org](http://www.mytecumseh.org)

## APPENDIX B2



### CITY OF TECUMSEH PARKS AND TRAILS GUIDE

## APPENDIX C

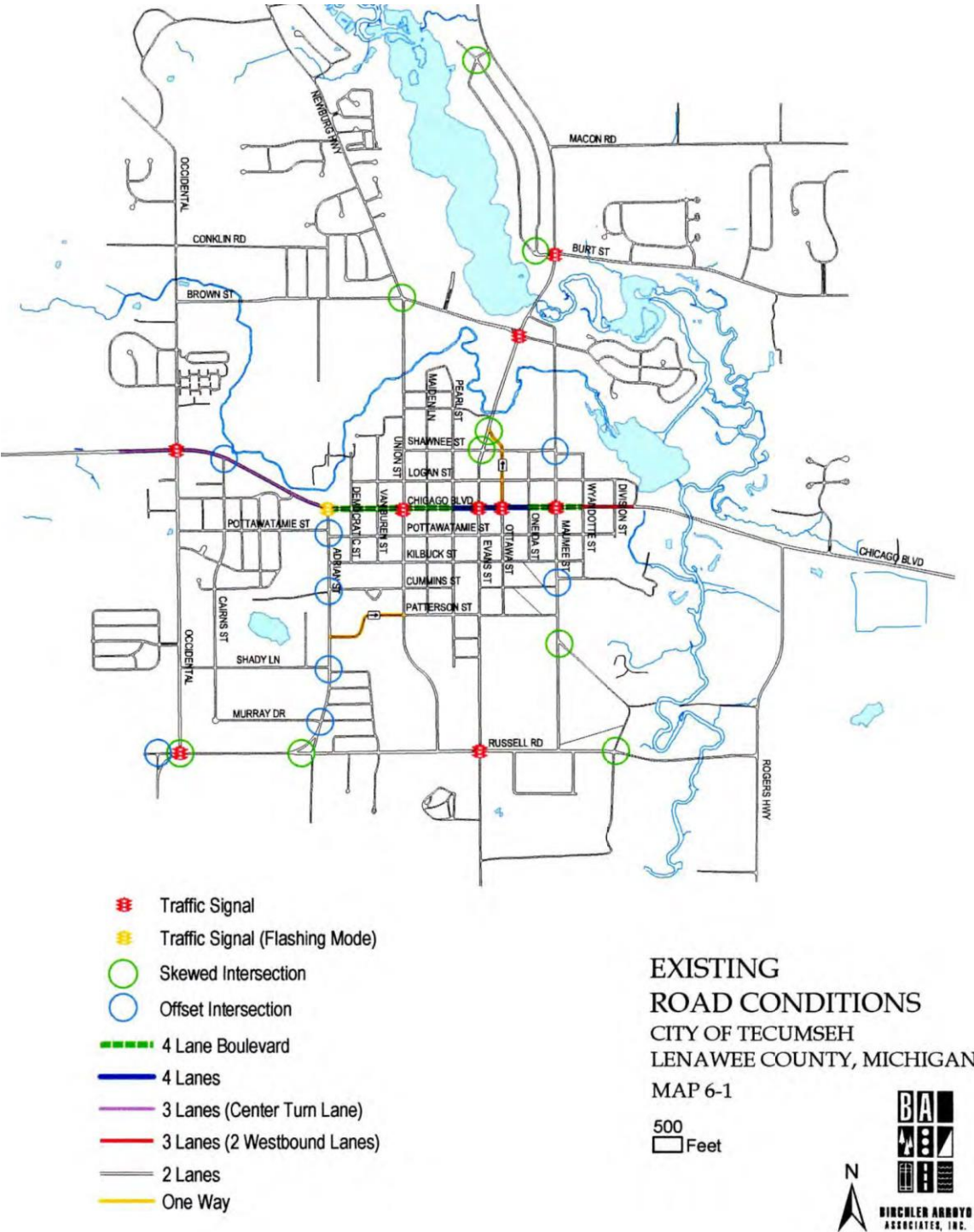


### LEGEND

- Existing Shared Use Path
- - - Proposed Shared Use Path
- Existing Paved Shoulder - Greater Than 4 Feet Wide
- - - Proposed Paved Shoulder - Greater Than 4 Feet Wide
- Existing Bike Lane
- - - Proposed Bike Lane
- Existing Side Path
- - - Proposed Non-Motorized Facility/Route
- Publicly-Owned Property

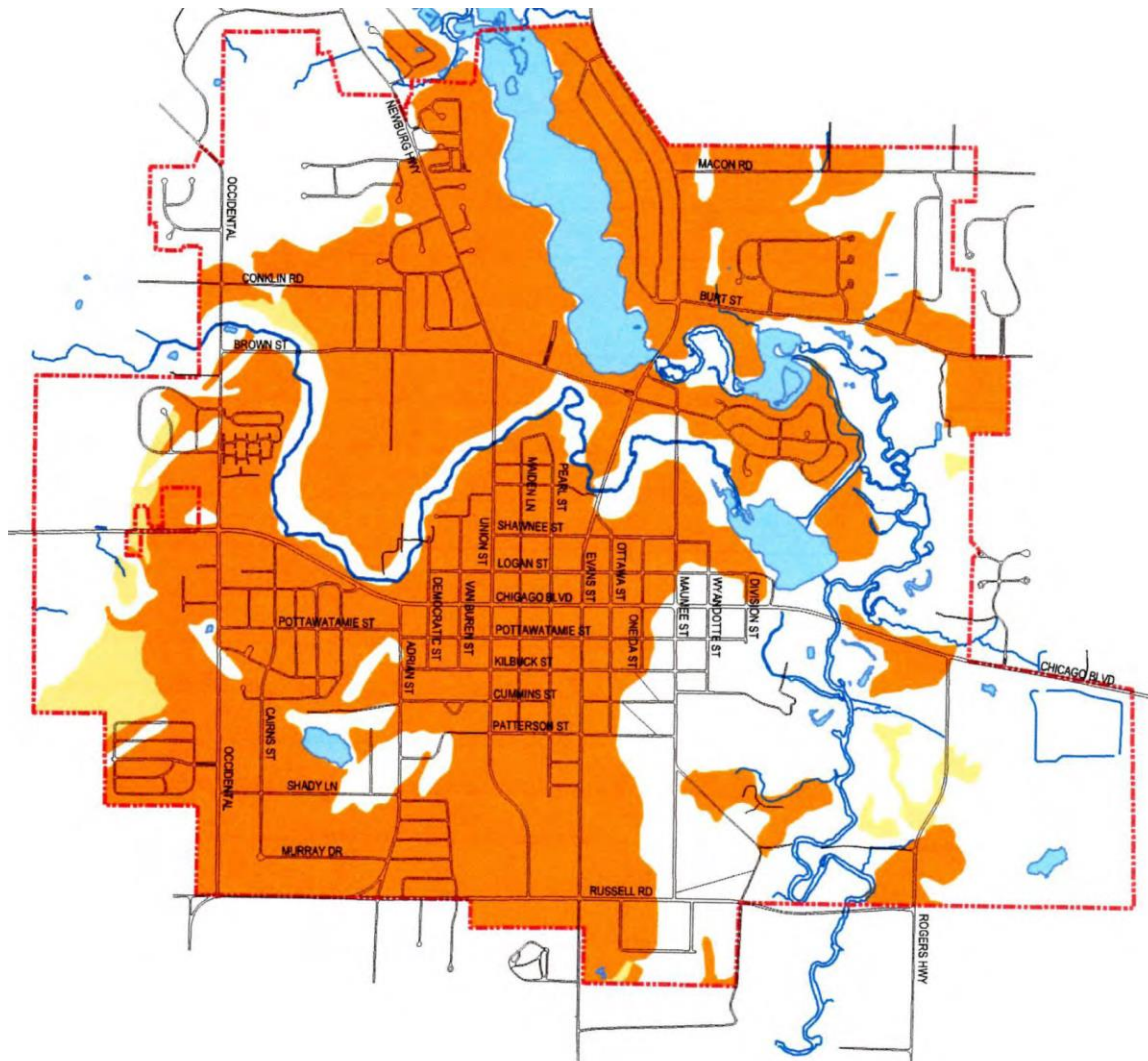
CONNECTING LENAWEE NON MOTORIZED PLAN: PROPOSED TECUMSEH ROUTE

# APPENDIX D





## APPENDIX E



- HIGH GROUNDWATER RECHARGE AREA
- MODERATE GROUNDWATER RECHARGE AREA
- LAKES

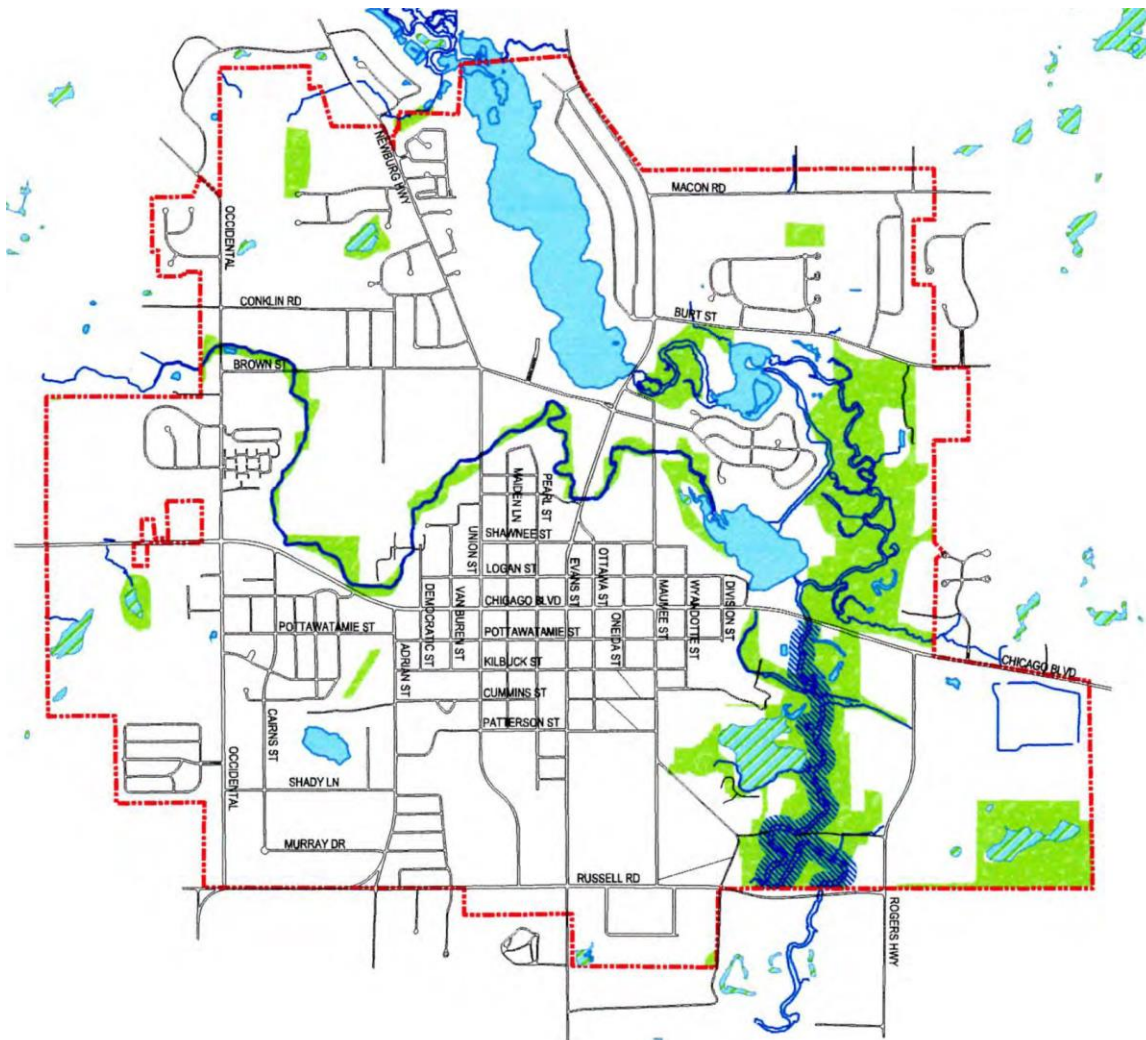
### GROUNDWATER RECHARGE CITY OF TECUMSEH LENAWEE COUNTY, MICHIGAN MAP A4-4

500  
Feet



Source: REGION II GIS DEPARTMENT

## APPENDIX F



-  LAKES
-  WOODLANDS
-  WETLANDS
-  WATERWAY PRESERVATION OVERLAY DISTRICT

### NATURAL FEATURES CITY OF TECUMSEH LENAWEE COUNTY, MICHIGAN MAP 11-1

500  
Feet

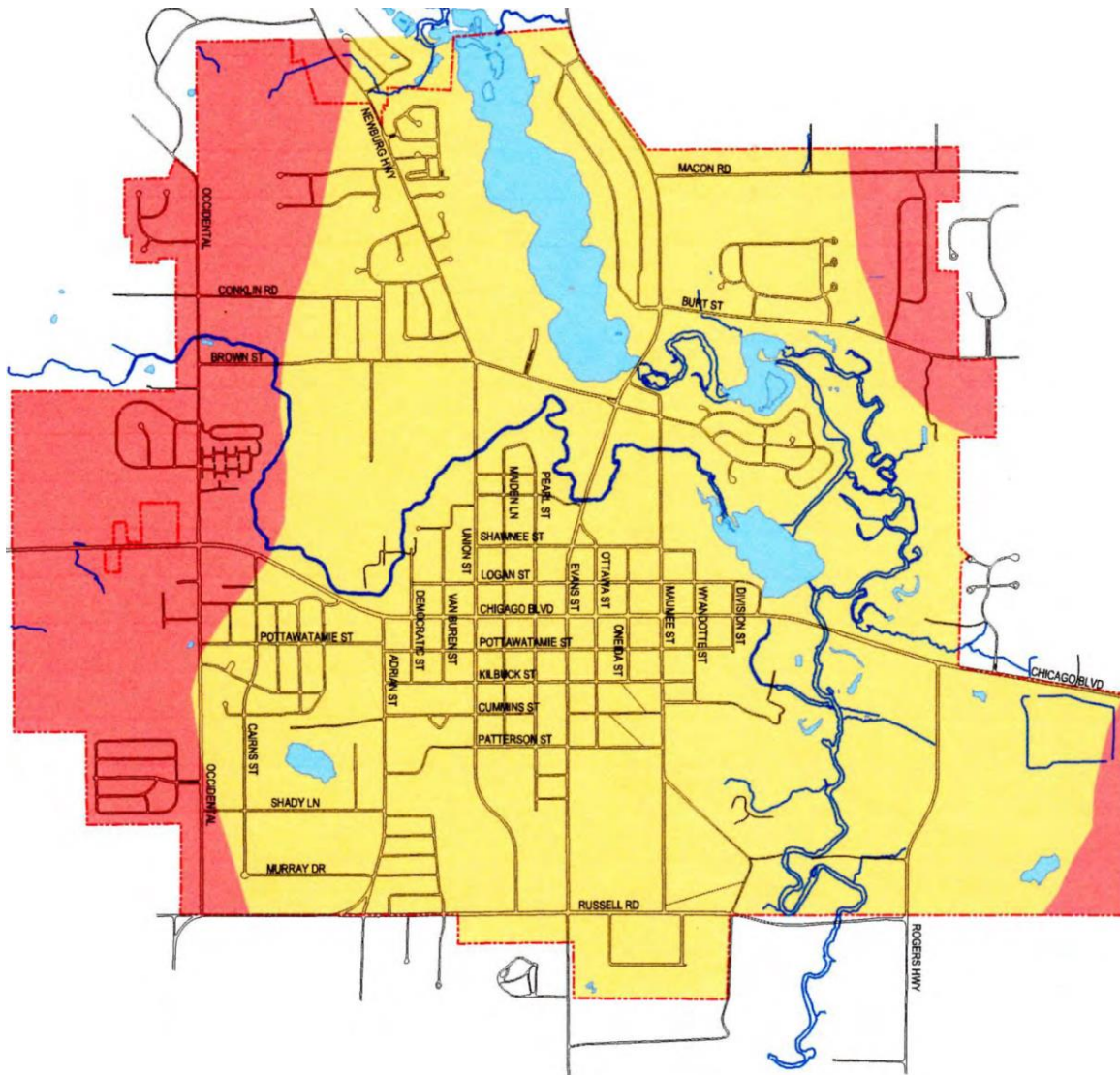


BURCHLER ARROYO  
ASSOCIATES, INC.

Source: REGION II GIS



## APPENDIX G



- END MORAINES OF FINE-TEXTURED TILL
- GLACIAL OUTWASH SAND & GRAVEL AND POST-GLACIAL ALLUVIUM

Source: MICHIGAN DNR

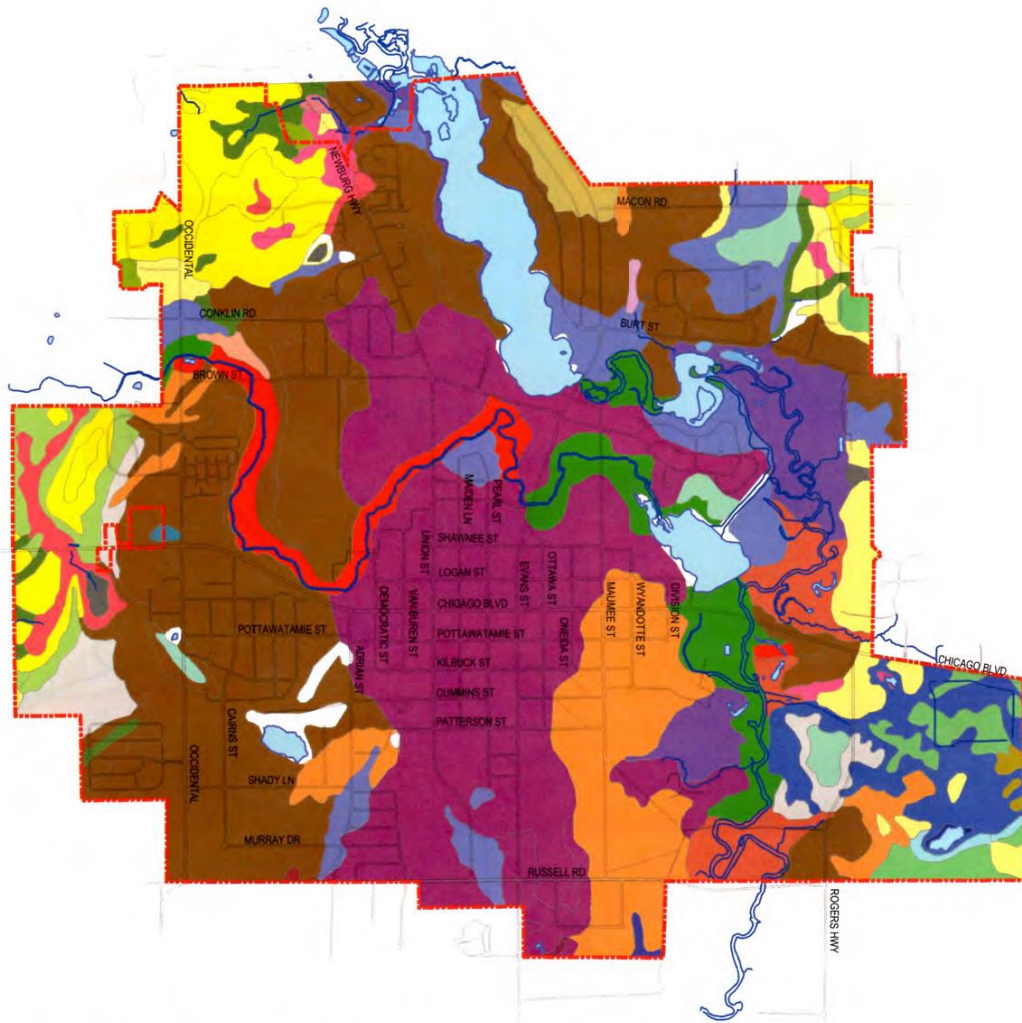
### QUATERNARY GEOLOGY CITY OF TECUMSEH LENAWEE COUNTY, MICHIGAN MAP A4-2

500  
Feet



BIRCHLER ARROYO  
ASSOCIATES, INC.

## APPENDIX H



- |                              |  |
|------------------------------|--|
| Barry sandy loam             | Genesee sandy loam                             |
| Blount loam                  | Griffin and Genesee loams                      |
| Brady and Macomb loams       | Griffin and Sloan sandy loams                  |
| Brady and Macomb sandy loams | Houghton muck                                  |
| Brady sandy loam             | Hoytville and Wauseon loams                    |
| Bronson sandy loam           | Hoytville clay loam and Rimer sandy loam       |
| Brookston loam               | Ionia loam                                     |
| Cadmus and Blount loams      | Kendallville loam                              |
| Cadmus loam                  | Kerston muck and loams                         |
| Cadmus sandy loam            | Kokomo and Barry loams                         |
| Carlisle muck                | Kokomo, Barry, and Walkill loams               |
| Conover loam                 | Macomb sandy clay loam and Hoytville clay loam |
| Fox cobbly gravelly loam     | Morley loam                                    |
| Fox loam                     | Nappanee loam                                  |
| Fox sandy loam               | Nappanee silt loam                             |
| Genesee and Eel loams        | Pewamo clay loam                               |
| Genesee loam                 | Sebewa loam                                    |
|                              | St. Clair loam                                 |
|                              | LAKES  |

Source: REGION II

### SOILS CITY OF TECUMSEH LENAWEE COUNTY, MICHIGAN MAP A4-3

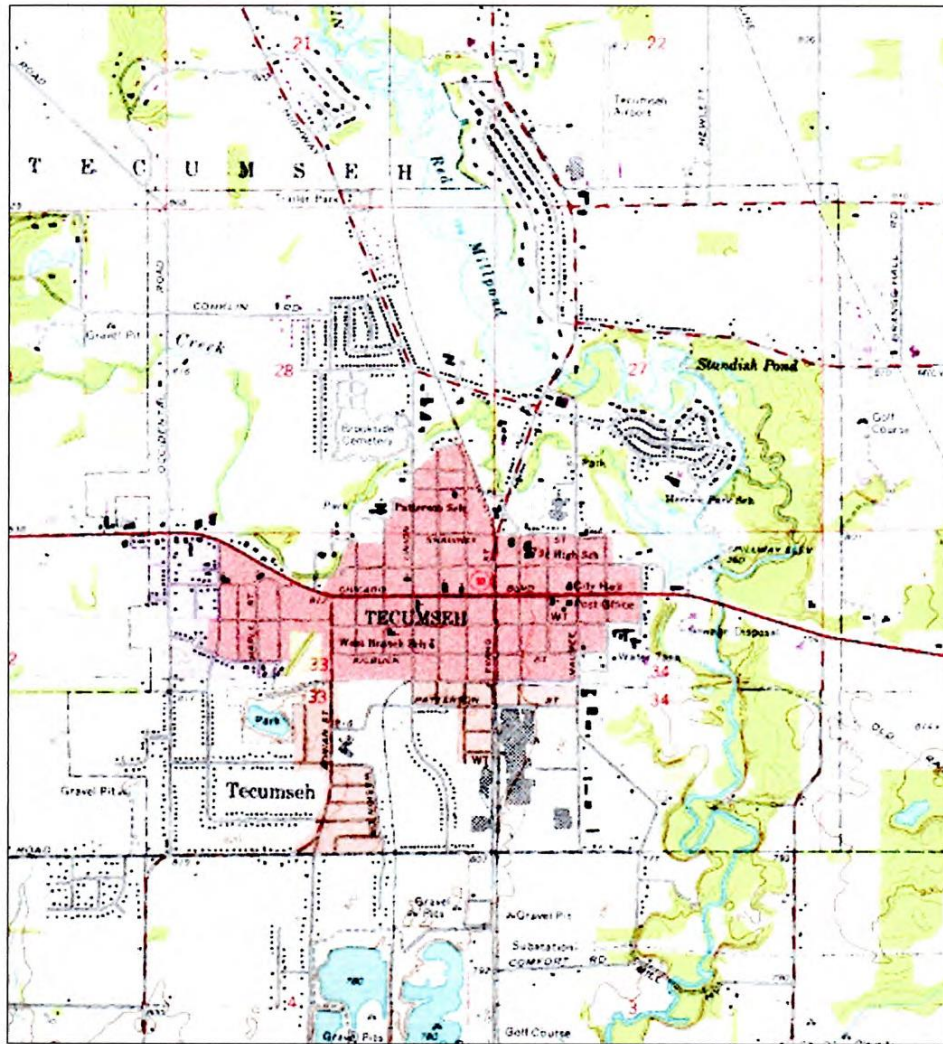
500  
Feet



BIRCHLER ARROYO  
ASSOCIATES, INC.



## APPENDIX I1



TOPOGRAPHY  
CITY OF TECUMSEH  
LENAWEE COUNTY, MICHIGAN  
MAP A4-1

PLEASE SEE NEXT PAGE FOR LEGEND.

Source: USGS



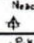
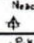
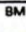
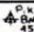

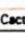


## APPENDIX I2

SOURCE: U.S. DEPARTMENT OF INTERIOR  
U.S. GEOLOGICAL SURVEY

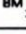

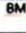

### CONTROL DATA AND MONUMENTS

Aerial photograph roll and frame number\* 3-20

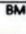
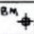

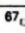

#### Horizontal control

Third order or better, permanent mark	Neace 	Neace 
With third order or better elevation	BM  45.1	 45.1
Checked spot elevation	 19.6	
Coincident with section corner	Cactus 	Cactus 
Unmonumented*		

#### Vertical control




Third order or better, with tablet	BM  16.3	
Third order or better, recoverable mark	 120.0	
Bench mark at found section corner	BM  18.6	
Spot elevation	 5.3	

#### Boundary monument






With tablet	BM  21.6	BM  71
Without tablet	 171.3	
With number and elevation	67  301.1	
U.S. mineral or location monument		

### CONTOURS

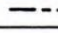
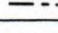
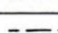
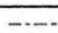



#### Topographic

Intermediate	
Index	
Supplementary	
Depression	
Cut; fill	







#### Bathymetric

Intermediate	
Index	
Primary	
Index Primary	
Supplementary	



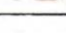

### BOUNDARIES

National	
State or territorial	
County or equivalent	
Civil township or equivalent	
Incorporated city or equivalent	
Park, reservation, or monument	
Small park	






### U.S. Public Land Survey System

Township or range line	
Location doubtful	
Section line	
Location doubtful	
Found section corner; found closing corner	
Witness corner; meander corner	

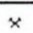
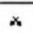



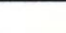
### Other land surveys

Township or range line	
Section line	
Land grant or mining claim; monument	
Fence line	

### SURFACE FEATURES

Levee	
Sand or mud area, dunes, or shifting sand	
Intricate surface area	
Gravel beach or glacial moraine	
Tailings pond	



### MINES AND CAVES

Quarry or open pit mine	
Gravel, sand, clay, or borrow pit	
Mine tunnel or cave entrance	
Prospect; mine shaft	
Mine dump	
Tailings	





### VEGETATION

Woods	
Scrub	
Orchard	
Vineyard	
Mangrove	

### GLACIERS AND PERMANENT SNOWFIELDS

Contours and limits	
Form lines	

### MARINE SHORELINE

<b>Topographic maps</b>	
Approximate mean high water	
Indefinite or unsurveyed	
<b>Topographic-bathymetric maps</b>	
Mean high water	
Apparent (edge of vegetation)	



## APPENDIX I3

Rock or coral reef	
Rock bare or awash	
Group of rocks bare or awash	
Exposed wreck	
Depth curve; sounding	
Breakwater, pier, jetty, or wharf	
Seawall	

### BATHYMETRIC FEATURES

Area exposed at mean low tide; sounding datum	
Channel	
Offshore oil or gas; well; platform	
Sunken rock	

### RIVERS, LAKES, AND CANALS

Intermittent stream	
Intermittent river	
Disappearing stream	
Perennial stream	
Perennial river	
Small falls; small rapids	
Large falls; large rapids	
Masonry dam	
Dam with lock	
Dam carrying road	

Perennial lake; Intermittent lake or pond	
Dry lake	
Narrow wash	
Wide wash	
Canal, flume, or aqueduct with lock	
Elevated aqueduct, flume, or conduit	
Aqueduct tunnel	
Well or spring; spring or seep	

### SUBMERGED AREAS AND BOGS

Marsh or swamp	
Submerged marsh or swamp	
Wooded marsh or swamp	
Submerged wooded marsh or swamp	
Rice field	
Land subject to inundation	

School; church	
Built-up Area	
Racetrack	
Airport	
Landing strip	
Well (other than water); windmill	
Tanks	
Covered reservoir	
Gaging station	
Landmark object (feature as labeled)	
Campground; picnic area	
Cemetery: small; large	

### ROADS AND RELATED FEATURES

Roads on Provisional edition maps are not classified as primary, secondary, or light duty. They are all symbolized as light duty roads.

Primary highway	
Secondary highway	
Light duty road	
Unimproved road	
Trail	
Dual highway	
Dual highway with median strip	
Road under construction	
Underpass; overpass	
Bridge	
Drawbridge	
Tunnel	

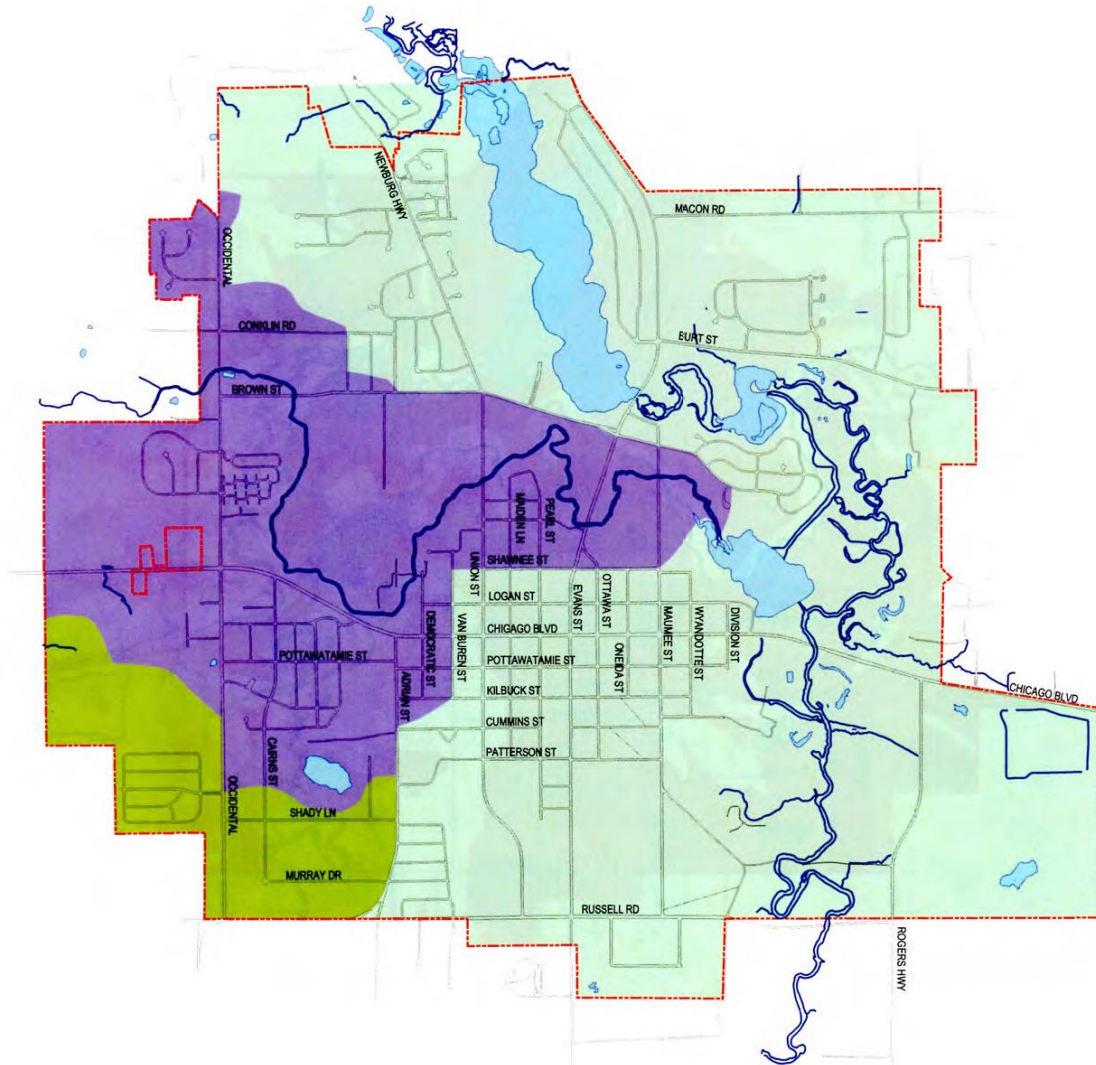
### RAILROADS AND RELATED FEATURES

Standard gauge single track; station	
Standard gauge multiple track	
Abandoned	
Under construction	
Narrow gauge single track	
Narrow gauge multiple track	
Railroad in street	
Juxtaposition	
Roundhouse and turntable	

### TRANSMISSION LINES AND PIPELINES

Power transmission line: pole; tower	
Telephone line	
Aboveground oil or gas pipeline	
Underground oil or gas pipeline	

## APPENDIX J



### SUBWATERSHEDS OF THE RIVER RAISIN

- EVANS CREEK
- RIVER RAISIN
- SOUTH BRANCH OF RIVER RAISIN

Source: MICHIGAN DNR

### WATERSHEDS CITY OF TECUMSEH LENAWEE COUNTY, MICHIGAN MAP A4-5

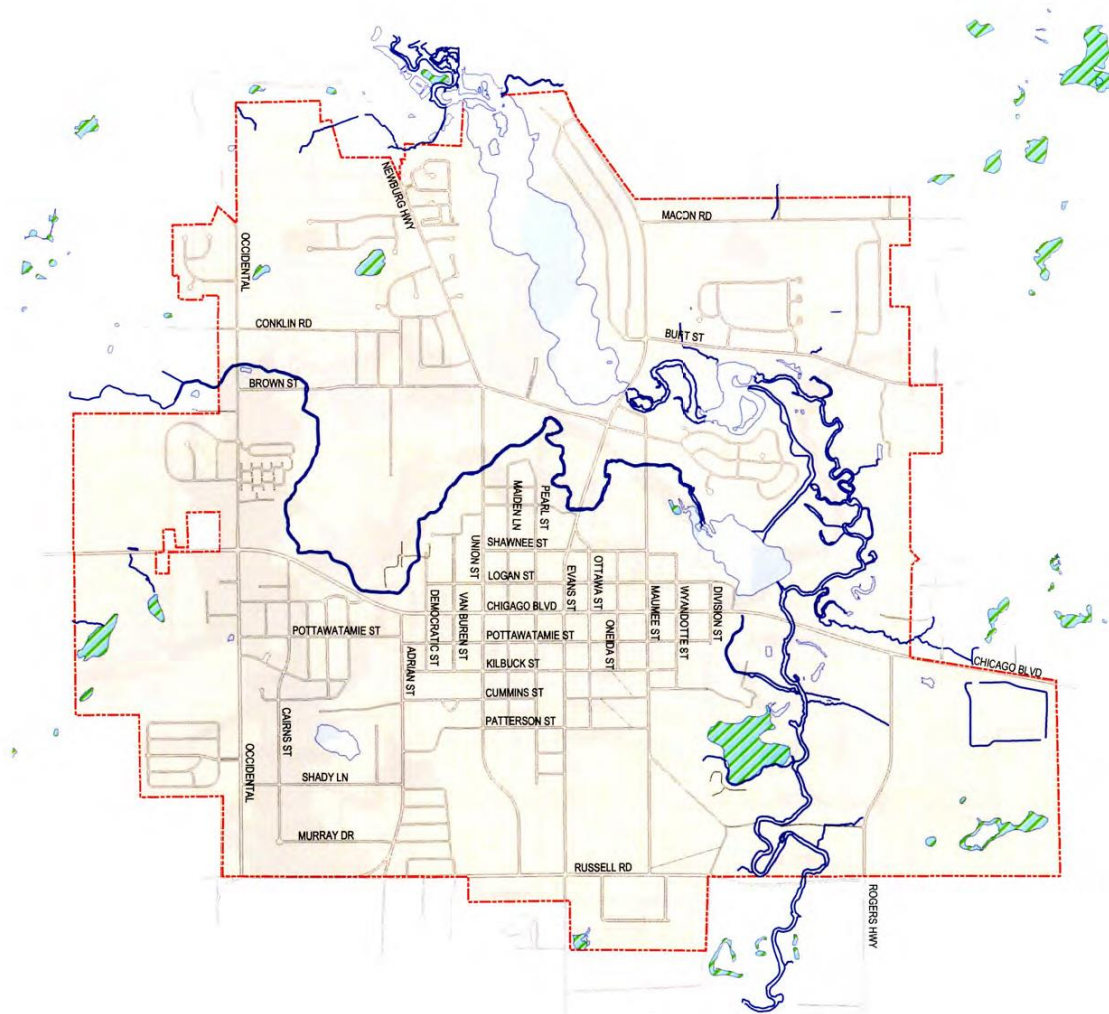
500  
Feet



BIRCHLER ARROYO  
ASSOCIATES, INC.



APPENDIX K



 WETLANDS

Source: CITY OF TECUMSEH

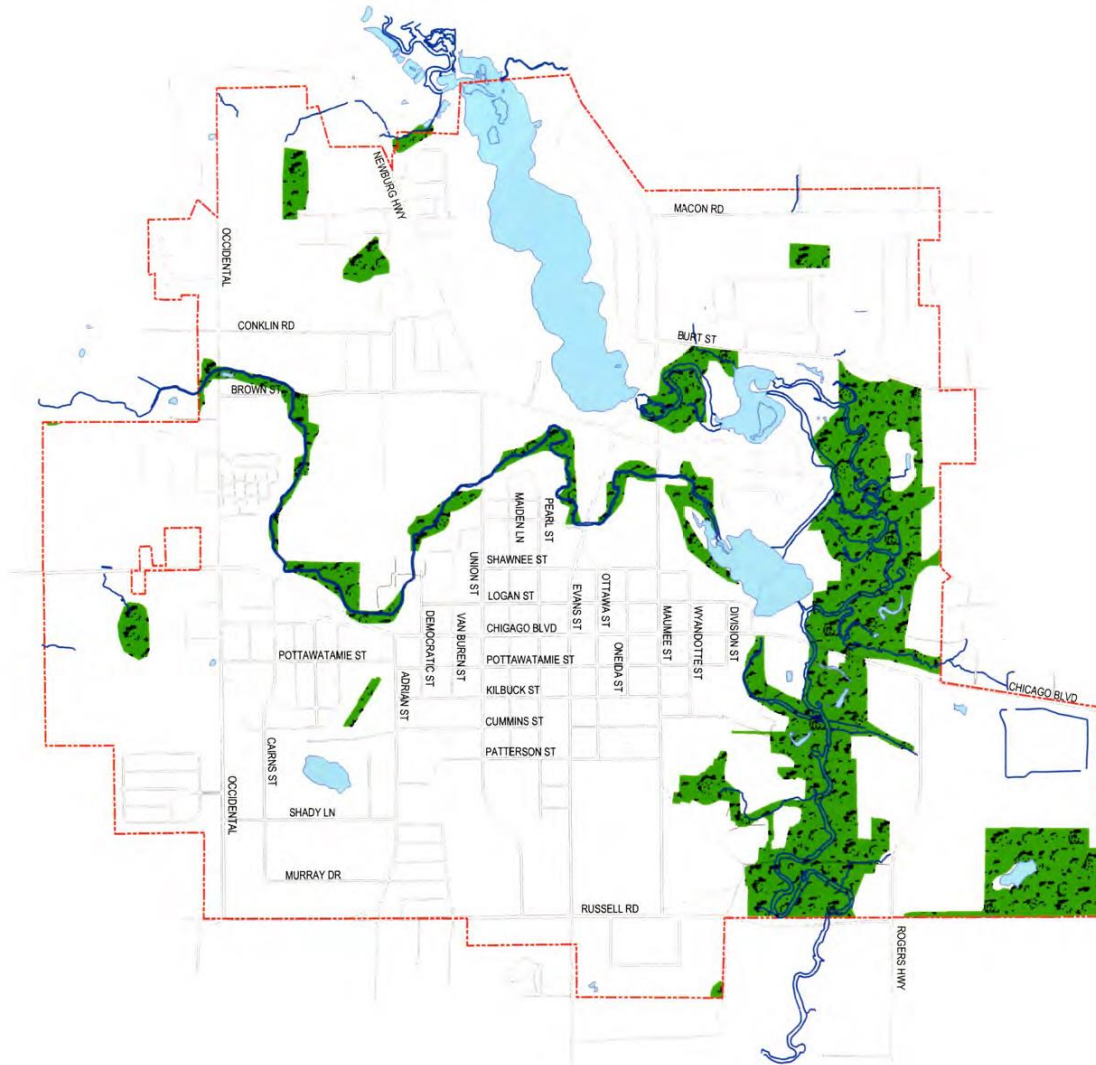
WETLANDS  
CITY OF TECUMSEH  
LENAWEE COUNTY, MICHIGAN  
MAP A4-6


500  
 Feet



BIRCHLER ARROYO  
ASSOCIATES, INC.

# APPENDIX L



 WOODLANDS

Source: MICHIGAN DNR

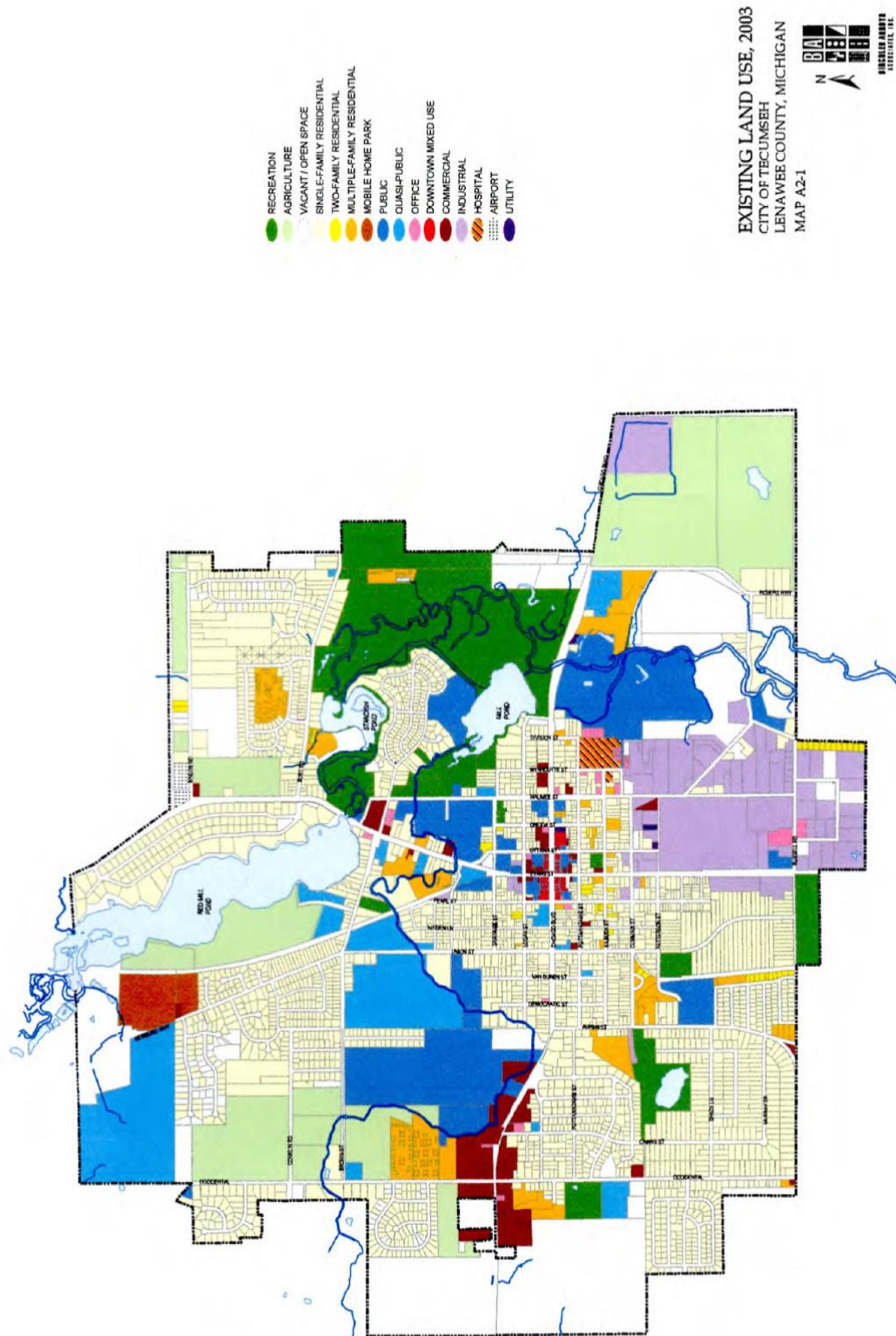
WOODLANDS  
CITY OF TECUMSEH  
LENAWEE COUNTY, MICHIGAN  
MAP A4-7

500  
Feet



BIRCHLER ARROYO  
ASSOCIATES, INC.

## APPENDIX M





**LAND USE PLAN**  
CITY OF TECUMSEH  
LENAWEE COUNTY, MICHIGAN  
MAP 5-1

500 Feet

**LEGEND:**

- SINGLE FAMILY RESIDENTIAL
- IN TOWN RESIDENTIAL
- TWO FAMILY
- MULTIPLE FAMILY RESIDENTIAL
- MOBILE HOME PARK
- TOWN-HOUSE/ATTACHED SINGLE FAMILY
- FLEXIBLE DEVELOPMENT
- DOWNTOWN MIXED USE
- NEIGHBORHOOD COMMERCIAL
- GENERAL COMMERCIAL
- OFFICE/MEDICAL
- INDUSTRIAL COMMERCIAL
- INDUSTRIAL
- PUBLIC / QUASI-PUBLIC
- RECREATION
- GREENBELT
- WETLAND
- DOWNTOWN DISTRICT OUTLINE
- WATERWAY PRESERVATION OVERLAY DISTRICT
- SCHOOLS

**NOTES:**

1. This map is intended to show general land use and is not intended to indicate the precise size, shape, or dimension of areas. These recommendations have a long-range planning horizon and do not constitute a guarantee, warranty, or representation of any kind.
2. The City of Tecumseh Comprehensive Plan includes the Land Use Plan Map and all text, maps, charts, tables, and other graphics in the Comprehensive Plan.
3. See the Executive Policy Plan map for more specific, detailed, and density recommendations.

## APPENDIX O

*Parks & Recreation*

City of Tecumseh

*AJ Smith*  
**Recreation Center**

810 N. Evans Street • Tecumseh, MI 49286 • Phone: 517-423-5602 • [www.mytecumseh.org](http://www.mytecumseh.org)



This draft copy of the 2017-2021 City of Tecumseh Parks and Recreation Five Year Plan was developed in accordance with the Guidelines for the Development of Community Park, Recreation, Open Space and Greenways Plans as revised by the Michigan Department of Natural Resources in 2015. The draft version must be made available for the public to view for at least 30 days.

You may access the draft of this plan at this link:

[TPR Five Year Plan DRAFT](#)



[Print Report](#)

### City of Tecumseh Email Statistics 2/3/2017

Email Name: Five Year Plan 2017-2021

Template: - My Image I

Lists: General Information & Public Notices  
Department of Parks & Rec  
Tecumseh Center for the Arts  
Community Events  
Agenda & Meetings  
E-Newsletter Only

#### Email Run History

Sending Type	Sent	Run Date	Status
Original Send	2630	10/13/2016	Successfully Sent

#### Email Stats

Sent	Bounces	Spam Reports	Unsubscribes	Opens	Clicks	Forwards
2630	11.9% (312)	0	0	16.2% (375)	18.7% (70)	0

#### Click-through Stats

Email Link	Unique Click-throughs	Click-through Distribution
<a href="http://www.mytecumseh.org/images/PR%20five%20-year%20plan%20DRAFT%20reduced.pdf">http://www.mytecumseh.org/images/PR%20five%20-year%20plan%20DRAFT%20reduced.pdf</a>	71	100.0%
Total Click-throughs	71	100%

#### Social Stats

Page Views	Share	Send	Like	Twitter	LinkedIn	(Other)
0	0	0	0	0	0	0

[Print Report](#)

## APPENDIX P

### PUBLIC NOTIFICATION OF RECREATION PLAN DRAFT

City of  
**Tecumseh**

HOME

PROGRAMS

MEMBERSHIPS

FACILITIES

CALENDAR

AFTERSCHOOL PRGM. GR. 5-12

FORMS & DOCUMENTS

POLICIES AND PROCEDURES

MI SPORTS CONCUSSION LAW

FAQS

CONTACT

REGISTRATION HELP

Account Login

Not logged in

If you've already set up a profile click here to login

Login to RecDesk

If you have not set up a RecDesk profile yet click here

Create Account


There are currently 0 pending registration(s) in the cart.

Find us on:  
**facebook**

Sign up for our  
Email Newsletter

Announcements & News

AJ Smith Recreation Center



Online Account Creation

Good news! You are now able to create your online account yourself. Just click on the create new account button to the left of this message. Once there fill in a parent/guardian information then anyone else in the household who might participate in our programs. Once you have done that an email is sent to us and we have to approve your account. If this is during our normal business hours you can expect a response fairly quickly. If it is outside of our business hours or on the weekend we will approve it at the start of the next business day. Our normal business hours are Mondays through Thursdays 9:00 AM - 8:00 PM and Fridays 9:00 AM - 4:00 PM. Once you are approved you are able to use the online registration system. As always if you have questions do not hesitate to call us at 517-423-5602.

Parks and Rec Five year plan 2017-2021 Draft - Wednesday, October 12, 2016

This draft copy of the 2017-2021 City of Tecumseh Parks and Recreation Five Year Plan was developed in accordance with the *Guidelines for the Development of Community Park, Recreation, Open Space and Greenways Plans* as revised by the Michigan Department of Natural Resources in 2015. The draft version must be made available for the public to view for at least 30 days. [read more...](#)

Calendar


City of Tecumseh Parks & Recreation

Today December 2016

Print Week Month Agenda

Sun	Mon	Tue	Wed	Thu	Fri	Sat
27	28	29	30	Dec 1	2	3
	9am REFIT! Carc 10am Tot Lot - C <a href="#">+5 more</a>	9am Yoga with K 12pm Walking a <a href="#">+4 more</a>	9am Zumba 10am Adult Drop <a href="#">+3 more</a>	9am Refit! Card 12pm Walking ar <a href="#">+3 more</a>	7pm City of Tec 8pm This event <a href="#">+2 more</a>	8am PIYO with K 8:30am Cardio Di <a href="#">+2 more</a>
4	5	6	7	8	9	10

Jan/Feb 2017 Guide





## **APPENDIX Q**

### **PUBLIC NOTICE**

#### **PARKS AND RECREATION ADVISORY BOARD**

Tecumseh Parks and Recreation Advisory Board will hold a Public Hearing in the Community Room at the AJ Smith Recreation Center located at 810 N. Evans Street, Tecumseh Michigan on Thursday, November 17, 2016 at 5:15 pm.

The purpose of this public hearing will be to receive public comment regarding the proposed City of Tecumseh Parks and Recreation 2017-2021 Five Year Plan. The public is invited to attend.

**PUBLIC NOTICE**

**PARKS AND RECREATION ADVISORY BOARD**

**Tecumseh Parks and Recreation Advisory Board will hold a Public Hearing in the Community Room at the AJ Smith Recreation Center located at 810 N. Evans St., Tecumseh, Michigan on Thursday, November 17, 2016 at 5:15 pm.**

**The purpose of this public hearing will be to receive public comment regarding the proposed City of Tecumseh Parks and Recreation 2017-2021 Five Year Plan. The public is invited to attend.**

Notice ran in the November 11, 2016 edition of the Tecumseh Herald.

## APPENDIX R

# *City of Tecumseh* **Parks & Recreation**

**Agenda  
City of Tecumseh  
Parks and Recreation Advisory Board Special Meeting**

Thursday, November 17, 2016 5:15 pm  
AJ Smith Recreation Center Community Room  
810 N. Evans Street, Tecumseh MI

1. Call to Order
2. Pledge of Allegiance
3. Establish Quorum
4. Approval of Agenda (Action)
5. Public Comment RE:  
2017-2021 City of Tecumseh Parks and Recreation Five Year Plan
6. Approval of  
2017-2021 City of Tecumseh Parks and Recreation Five Year Plan (Action)
7. Public Comment: Items not on the agenda
8. Adjourn meeting (Action)

Next Regularly scheduled quarterly meeting date: Thursday, January 5, 2017

## APPENDIX S

# *City of Tecumseh* **Parks & Recreation**

### City of Tecumseh Parks and Recreation Advisory Board Special Meeting Minutes

Meeting Date: Thursday, November 17, 2016 5:15 pm  
Meeting Location: AJ Smith Recreation Center Community Room  
Members Present: Chairperson Larry Ash, Stacy Downing, Kyle Cook, Mickey Alvarado  
Members Excused: Chuck Gross  
Others Present: Shelley Lim, Parks and Recreation Director

- A. Chairperson Ash called meeting called to order at 5:15 pm
- B. Quorum established
- C. Approval of Agenda motioned by Alvarado, second by Downing.
  - a. motion carried
- D. Public Comment RE: 2017-2021 City of Tecumseh Parks and Recreation Five Year Plan
  - a. Public Comments: None
- E. Motion by Cook, second by Downing to add: "and expand access to: the last paragraph of text on page 46."
  - a. Motion carried
- F. Motion by Downing, second by Alvarado to add: "safe routes for pedestrians" to last paragraph of text on page 47.
  - a. Motion carried
- G. Approval of 2017-2021 City of Tecumseh Parks and Recreation Five Year Plan
  - a. Motion by Downing, second by Cook to approve the 2017-2021 City of Tecumseh Parks and Recreation Five Year Plan with the amended verbiage.
  - b. Motion carried
- H. Public Comment: Items not on the agenda
  - a. Public Comment: None
- I. Meeting adjourned at 5:43 pm

Next regularly scheduled quarterly meeting date: Thursday, January 5, 2017

## APPENDIX T

# *City of Tecumseh Parks & Recreation*

### CITY OF TECUMSEH PARKS AND RECREATION DEPARTMENT RECREATION PLAN

#### RESOLUTION OF APPROVAL ADVISORY BOARD OF THE CITY OF TECUMSEH PARKS AND RECREATION DEPARTMENT

WHEREAS, the City of Tecumseh Parks and Recreation Department has undertaken a Five Year Parks and Recreation Plan which describes the physical features, existing recreation facilities and the desired actions to be taken to improve and maintain recreation facilities during the period between 2017 and 2021, and

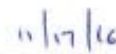
WHEREAS, a public comment session was held November 17, 2016 at the AJ Smith Recreation Center, located at 810 N. Evans Street, Tecumseh, Michigan 49286, to provide an opportunity for citizens to express opinions, ask questions, and discuss all aspects of the Recreation Plan, and

WHEREAS, the City of Tecumseh Parks and Recreation Department has developed the plan for the benefit of the entire community and to adopt the plan as a document to assist in meeting the recreation needs of the community, and

NOW, THEREFORE BE IT RESOLVED the Parks and Recreation Advisory Board of the City of Tecumseh hereby approves the 2017-2021 edition of the City of Tecumseh Parks and Recreation Department Five Year Plan and to recommend its adoption by the City of Tecumseh's City Council.

I, Larry Ash, Chair of the City of Tecumseh Parks and Recreation Advisory Board, do hereby certify that the foregoing is a true and original copy of a resolution adopted by the City of Tecumseh's Parks and Recreation Advisory Board at a Special Meeting thereof held on the seventeenth day of November, 2016.

  
\_\_\_\_\_  
Larry Ash, Chair  
Parks and Recreation Advisory Board  
City of Tecumseh

  
\_\_\_\_\_  
Date

## APPENDIX U

City Council Minutes

December 5, 2016

Page 3 of 4

YES: Harmon, Keiser, Naugle, Riddle, Wimple, Baker, Fox.

NO: None.

RESOLUTION DECLARED ADOPTED.)

### RESOLUTION

CITY COUNCIL OF THE CITY OF TECUMSEH RESOLVES: To approve the renewal of the lease agreement between Community Arts of Tecumseh and the City of Tecumseh for the use of the house at John W. Smith Park, beginning on January 1, 2017 and ending on December 31 2017. The terms, conditions and lease rate will remain the same as were in place in 2016.

Further, the Mayor and City Clerk are authorized to sign the lease agreement.

RESOLUTION was offered by Council member Wimple and supported by Council member Harmon.

YES: Keiser, Naugle, Riddle, Wimple, Baker, Fox, Harmon.

NO: None.

RESOLUTION DECLARED ADOPTED.

### RESOLUTION

CITY COUNCIL OF THE CITY OF TECUMSEH RESOLVES: To adopt the City of Tecumseh Parks and Recreation 2017-2021 Five Year Plan.

RESOLUTION was offered by Council member Naugle and supported by Council member Wimple.)

YES: Riddle, Wimple, Baker, Fox, Harmon, Naugle, Keiser.

NO: None.

RESOLUTION DECLARED ADOPTED.)

## APPENDIX V



---

January 11, 2017

Steve Duke, Executive Director  
Region 2 Planning Commission  
120 West Michigan Avenue  
Jackson, Michigan 49201

Subject: City of Tecumseh Parks and Recreation 2017-2021 Five Year Plan

Dear Mr. Duke,

In order to maintain eligibility for federal and state funding for recreation projects, local units of government must have a recreation plan approved by the Michigan Department of Natural Resources & Environment. Copies of the plan must also be made available to the Region 2 Planning Commission and County of Lenawee. The following link provides access to the City of Tecumseh Parks and Recreation 2017-2021 Five Year Plan:

<http://www.mytecumseh.org/government/parks-rec/parks-and-recreation-2.htm>

Please contact me if you have any questions.

Sincerely,

Shelley Lim  
Parks and Recreation Director  
City of Tecumseh  
[slim@tecumseh.mi.us](mailto:slim@tecumseh.mi.us)  
517-423-5602



## APPENDIX W



January 11, 2017

David Stimpson, Chair  
Lenawee County Board of Commissioners  
301 N. Main Street  
Adrian, Michigan 49221

Subject: City of Tecumseh Parks and Recreation 2017-2021 Five Year Plan

Dear Mr. Stimpson,

In order to maintain eligibility for federal and state funding for recreation projects, local units of government must have a recreation plan approved by the Michigan Department of Natural Resources & Environment. Copies of the plan must also be made available to the County of Lenawee and the Region 2 Planning Commission. The following link provides access to the City of Tecumseh Parks and Recreation 2017-2021 Five Year Plan:

<http://www.mytecumseh.org/government/parks-rec/parks-and-recreation-2.htm>

Please contact me if you have any questions.

Sincerely,

A handwritten signature in blue ink that reads "Shelley Lim".

Shelley Lim  
Parks and Recreation Director  
City of Tecumseh  
[slim@tecumseh.mi.us](mailto:slim@tecumseh.mi.us)  
517-423-5602